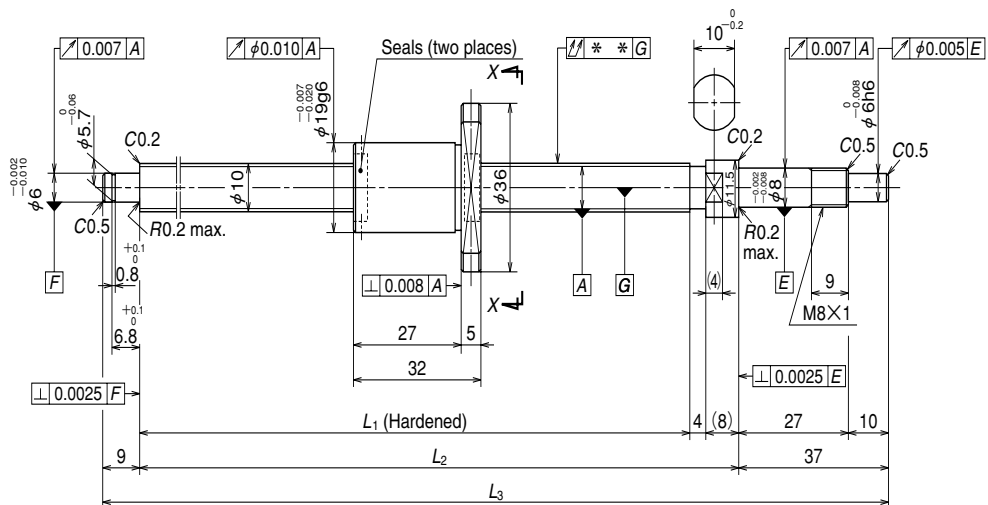


A Series: Finished shaft end

(Fine lead) Dia. 10, Lead 2.5

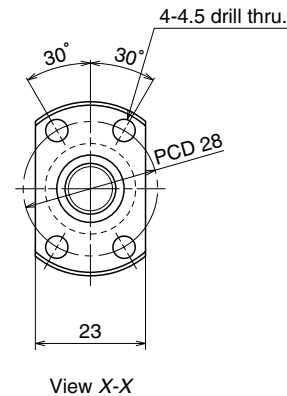


Nut models: MPFD, MSFD

NSK
φ 10×2.5



Unit: mm



Ball screw specifications		
Product classification	Preloaded	Precise clearance
Shaft dia. X Lead / Direction of turn	10×2.5/Right	
Preload / Ball recirculation	P preload / Deflector	
Ball dia. / Ball circle dia.	1.588/10.4	
Effective turns of balls	1×3	
Accuracy grade / Preload / Axial play	C3/Z	C3/T
Basic load rating (N)	Dynamic C_a	2130
	Static C_{0a}	3640
Axial play	0	0.005 or less
Dynamic friction torque, (N·cm)	0.2~2.9	~0.5
Spacer ball	None	
Factory packed grease	NSK grease PS2	

Ball screw No.		Stroke	
		Nominal	Maximum (L ₁ -Nut length)
Preloaded (MPFD)	Precise clearance (MSFD)		
W1001MA-5PY-C3Z2.5	W1001MA-6Y-C3T2.5	50	68
W1001MA-7PY-C3Z2.5	W1001MA-8Y-C3T2.5	100	118
W1002MA-5PY-C3Z2.5	W1002MA-6Y-C3T2.5	150	168
W1002MA-7PY-C3Z2.5	W1002MA-8Y-C3T2.5	200	218

- Remarks
1. We recommend NSK support unit WBK08-01A (square type, fixed side), WBK08S-01 (square type, simple support side), and WBK08-11 (round type, fixed side).
 2. NSK grease PS2 is recommended. Apply to the screw shaft surface when replenishing.
 3. Permissible rotational speed is determined by a $d \cdot n$ value and a critical speed. See page B509.
Root diameter of screw shaft (dr) is 8.6 mm.

Unit: mm

Screw shaft length			Lead accuracy			Shaft run-out **	Mass (Kg)	Permissible rotational speed N (min ⁻¹)
L ₁	L ₂	L ₃	T	e _p	v _u			Supporting condition
								Fixed - Simple support
100	112	158	0	0.008	0.008	0.020	0.14	3000
150	162	208	0	0.010	0.008	0.030	0.17	3000
200	212	258	0	0.010	0.008	0.030	0.20	3000
250	262	308	0	0.012	0.008	0.030	0.23	3000