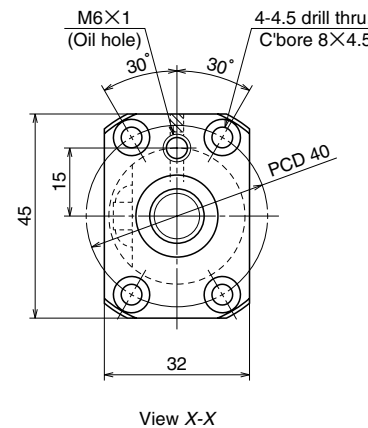


Unit: mm



Ball screw specifications		
Product classification	Preloaded	Precise clearance
Shaft dia. X Lead / Direction of turn	12 × 10 / Right	
Preload / Ball recirculation	P preload / Return tube	
Ball dia. / Ball circle dia.	2.381 / 12.5	
Effective turns of balls	2.5 × 1	
Accuracy grade / Preload / Axial play	C5/Z	C5/T
Basic load rating (N)	Dynamic C_a	2360
	Static C_{0a}	3240
Dynamic C_{0a}	3240	6480
Axial play	0	0.005 or less
Dynamic friction torque, (N · cm)	1.0~4.9	~1.5
Spacer ball	Yes	None
Factory packed grease	NSK grease LR3	
Internal spatial volume of nut (cm ³)	1.4	

Ball screw No.		Stroke	
		Nominal	Maximum (L ₁ -Nut length)
Preloaded (LPFT)	Precise clearance (LSFT)		
W1201FA-5P-C5Z10	W1201FA-6-C5T10	100	110
W1202FA-5P-C5Z10	W1202FA-6-C5T10	150	160
W1203FA-3P-C5Z10	W1203FA-4-C5T10	250	260
W1204FA-3P-C5Z10	W1204FA-4-C5T10	350	360
W1205FA-3P-C5Z10	W1205FA-4-C5T10	450	460

Screw shaft length			Lead accuracy			Shaft run-out **	Mass (Kg)	Permissible rotational speed N (min ⁻¹)
								Supporting condition
L ₁	L ₂	L ₃	T	e _p	v _u	0.035	0.43	Fixed - Simple support
160	175	230	0	0.020	0.018			0.035
210	225	280	0	0.023	0.018	3000		
310	325	380	0	0.023	0.018	0.050	0.56	3000
410	425	480	0	0.027	0.020			3000
510	525	580	0	0.030	0.023	0.075	0.72	3000

- Remarks
1. We recommend NSK support unit WBK10-01A (square type, fixed side), WBK10S-01 (square type, simple support side), and WBK10-11 (round type, fixed side).
 2. NSK grease LR3 is recommended. The amount for replenishing should be about 50% of nut internal space capacity.
 3. Permissible rotational speed is determined by a d · n value and a critical speed. See page B509.
Root diameter of screw shaft (dr) is 10.0 mm.

Unit: mm