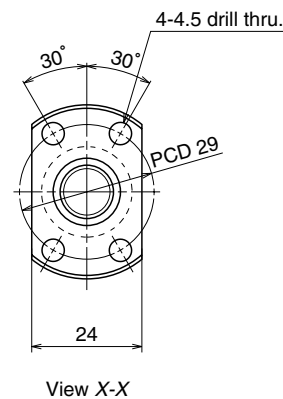


Unit: mm



Ball screw specifications		
Product classification	Preloaded	Precise clearance
Shaft dia. X Lead / Direction of turn	12×2/Right	
Preload / Ball recirculation	P preload / Deflector	
Ball dia. / Ball circle dia.	1.200/12.3	
Effective turns of balls	1×3	
Accuracy grade / Preload / Axial play	C3/Z	C3/T
Basic load rating (N)	Dynamic C_a	1660
	Static C_{0a}	3620
Axial play	0	0.005 or less
Dynamic friction torque, (N·cm)	0.4~3.4	~1.0
Spacer ball	None	
Factory packed grease	NSK grease PS2	

Ball screw No.		Stroke	
		Nominal	Maximum (L ₁ -Nut length)
Preloaded (MPFD)	Precise clearance (MSFD)		
W1201MA-1PY-C3Z2	W1201MA-2Y-C3T2	50	82
W1201MA-3PY-C3Z2	W1201MA-4Y-C3T2	100	132
W1202MA-1PY-C3Z2	W1202MA-2Y-C3T2	150	182
W1202MA-3PY-C3Z2	W1202MA-4Y-C3T2	200	232
W1203MA-1PY-C3Z2	W1203MA-2Y-C3T2	250	282

- Remarks
1. We recommend NSK support unit WBK10-01A (square type, fixed side), WBK10S-01 (square type, simple support side), and WBK10-11 (round type, fixed side).
 2. NSK grease PS2 is recommended. Apply to the screw shaft surface when replenishing.
 3. Permissible rotational speed is determined by a $d \cdot n$ value and a critical speed. See page B509. Root diameter of screw shaft (dr) is 10.9 mm.

Unit: mm

Screw shaft length			Lead accuracy			Shaft run-out **	Mass (Kg)	Permissible rotational speed N (min ⁻¹)
L ₁	L ₂	L ₃	T	e _p	v _u			Supporting condition
								Fixed - Simple support
110	125	180	0	0.010	0.008	0.020	0.20	3000
160	175	230	0	0.010	0.008	0.030	0.24	3000
210	225	280	0	0.012	0.008	0.030	0.28	3000
260	275	330	0	0.012	0.008	0.040	0.32	3000
310	325	380	0	0.012	0.008	0.040	0.36	3000