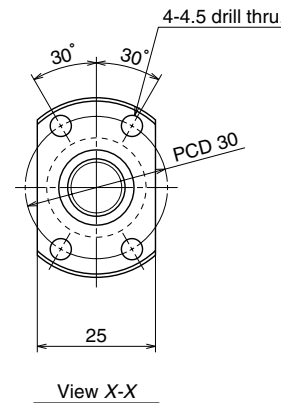


Unit: mm



Ball screw specifications		
Product classification	Preloaded	Precise clearance
Shaft dia. X Lead / Direction of turn	12×2.5/Right	
Preload / Ball recirculation	P preload / Deflector	
Ball dia. / Ball circle dia.	1.588/12.4	
Effective turns of balls	1×3	
Accuracy grade / Preload / Axial play	C3/Z	C3/T
Basic load rating (N)	Dynamic $C_a$	2360
	Static $C_{0a}$	4540
Axial play	0	0.005 or less
Dynamic friction torque, (N·cm)	0.4~3.4	~1.0
Spacer ball	None	
Factory packed grease	NSK grease PS2	

Ball screw No.		Stroke	
		Nominal	Maximum (L <sub>1</sub> -Nut length)
Preloaded (MPFD)	Precise clearance (MSFD)		
<b>W1201MA-5PY-C3Z2.5</b>	<b>W1201MA-6Y-C3T2.5</b>	50	78
<b>W1201MA-7PY-C3Z2.5</b>	<b>W1201MA-8Y-C3T2.5</b>	100	128
<b>W1202MA-5PY-C3Z2.5</b>	<b>W1202MA-6Y-C3T2.5</b>	150	178
<b>W1202MA-7PY-C3Z2.5</b>	<b>W1202MA-8Y-C3T2.5</b>	200	228
<b>W1203MA-3PY-C3Z2.5</b>	<b>W1203MA-4Y-C3T2.5</b>	250	278

- Remarks
1. We recommend NSK support unit WBK10-01A (square type, fixed side), WBK10S-01 (square type, simple support side), and WBK10-11 (round type, fixed side).
  2. NSK grease PS2 is recommended. Apply to the screw shaft surface when replenishing.
  3. Permissible rotational speed is determined by a  $d \cdot n$  value and a critical speed. See page B509. Root diameter of screw shaft (dr) is 10.6 mm.

Unit: mm

Screw shaft length			Lead accuracy			Shaft run-out **	Mass (Kg)	Permissible rotational speed N (min <sup>-1</sup> )
L <sub>1</sub>	L <sub>2</sub>	L <sub>3</sub>	T	e <sub>p</sub>	v <sub>u</sub>			Supporting condition
110	125	180	0	0.010	0.008	0.020	0.21	3000
160	175	230	0	0.010	0.008	0.030	0.25	3000
210	225	280	0	0.012	0.008	0.030	0.29	3000
260	275	330	0	0.012	0.008	0.040	0.33	3000
310	325	380	0	0.012	0.008	0.040	0.37	3000