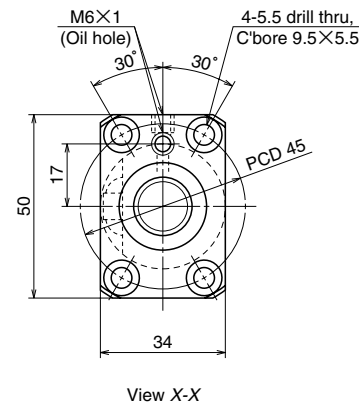
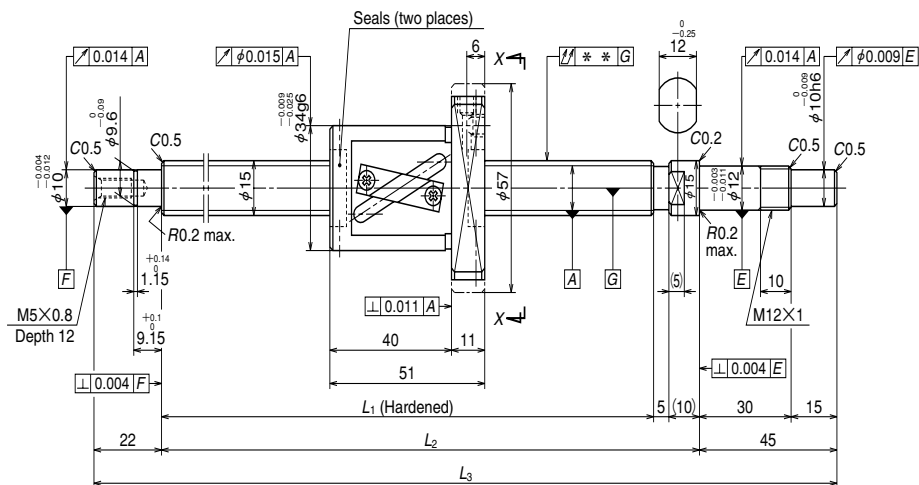




Unit: mm



Ball screw specifications		
Product classification	Preloaded	Precise clearance
Shaft dia. X Lead / Direction of turn	15 × 10 / Right	
Preload / Ball recirculation	P preload / Return tube	
Ball dia. / Ball circle dia.	3.175 / 15.5	
Effective turns of balls	2.5 × 1	
Accuracy grade / Preload / Axial play	C5/Z	C5/T
Basic load rating (N)	Dynamic C <sub>a</sub>	4450
	Static C <sub>0a</sub>	6380
Axial play	0	0.005 or less
	Dynamic friction torque, (N · cm)	1.5~7.8
Spacer ball	Yes	None
Factory packed grease	NSK grease LR3	
Internal spatial volume of nut (cm <sup>3</sup> )	2.3	

Ball screw No.		Stroke	
		Nominal	Maximum (L <sub>1</sub> -Nut length)
Preloaded (LPFT)	Precise clearance (LSFT)		
<b>W1501FA-1P-C5Z10</b>	<b>W1501FA-2-C5T10</b>	100	138
<b>W1502FA-1P-C5Z10</b>	<b>W1502FA-2-C5T10</b>	150	188
<b>W1502FA-3P-C5Z10</b>	<b>W1502FA-4-C5T10</b>	200	238
<b>W1503FA-1P-C5Z10</b>	<b>W1503FA-2-C5T10</b>	250	288
<b>W1503FA-3P-C5Z10</b>	<b>W1503FA-4-C5T10</b>	300	338
<b>W1504FA-1P-C5Z10</b>	<b>W1504FA-2-C5T10</b>	350	388
<b>W1504FA-3P-C5Z10</b>	<b>W1504FA-4-C5T10</b>	400	438
<b>W1505FA-1P-C5Z10</b>	<b>W1505FA-2-C5T10</b>	450	488
<b>W1505FA-3P-C5Z10</b>	<b>W1505FA-4-C5T10</b>	500	538
<b>W1506FA-1P-C5Z10</b>	<b>W1506FA-2-C5T10</b>	550	588
<b>W1506FA-3P-C5Z10</b>	<b>W1506FA-4-C5T10</b>	600	638
<b>W1507FA-1P-C5Z10</b>	<b>W1507FA-2-C5T10</b>	700	738
<b>W1508FA-1P-C5Z10</b>	<b>W1508FA-2-C5T10</b>	800	838
<b>W1510FA-1P-C5Z10</b>	<b>W1510FA-2-C5T10</b>	1000	1038

Screw shaft length			Lead accuracy			Shaft run-out **	Mass (Kg)	Permissible rotational speed N (min <sup>-1</sup> )	
								Supporting condition	
L <sub>1</sub>	L <sub>2</sub>	L <sub>3</sub>	T	e <sub>p</sub>	v <sub>a</sub>		Fixed - Simple support	Fixed - Fixed	
189	204	271	0	0.020	0.018	0.025	0.61	3000	3000
239	254	321	0	0.023	0.018	0.035	0.67	3000	3000
289	304	371	0	0.023	0.018	0.035	0.74	3000	3000
339	354	421	0	0.025	0.020	0.040	0.80	3000	3000
389	404	471	0	0.025	0.020	0.040	0.86	3000	3000
439	454	521	0	0.027	0.020	0.050	0.93	3000	3000
489	504	571	0	0.027	0.020	0.050	1.0	3000	3000
539	554	621	0	0.030	0.023	0.050	1.1	3000	3000
589	604	671	0	0.030	0.023	0.065	1.1	3000	3000
639	654	721	0	0.035	0.025	0.065	1.2	3000	3000
689	704	771	0	0.035	0.025	0.065	1.2	3000	3000
789	804	871	0	0.035	0.025	0.085	1.4	3000	3000
889	904	971	0	0.040	0.027	0.085	1.5	2400	3000
1089	1104	1171	0	0.046	0.030	0.110	1.8	1590	2250

- Remarks
1. We recommend NSK support unit WBK12-01A (square type, fixed side), WBK12S-01 (square type, simple support side), and WBK12-11 (round type, fixed side).
  2. NSK grease LR3 is recommended. The amount for replenishing should be about 50% of nut internal space capacity.
  3. Permissible rotational speed is determined by a d · n value and a critical speed. See page B509.  
Root diameter of screw shaft (dr) is 12.2 mm.