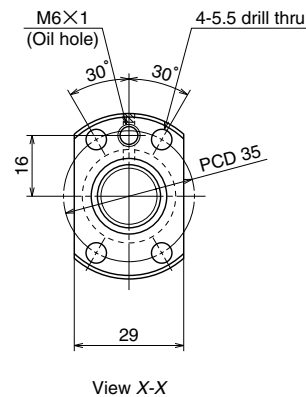


Unit: mm



Ball screw specifications		
Product classification	Preloaded	Precise clearance
Shaft dia. X Lead / Direction of turn	16 x 2 / Right	
Preload / Ball recirculation	P preload / Deflector	
Ball dia. / Ball circle dia.	1.588 / 16.4	
Effective turns of balls	1 x 4	
Accuracy grade / Preload / Axial play	C3/Z	C3/T
Basic load rating (N)	Dynamic C <sub>a</sub>	3510
	Static C <sub>0a</sub>	8450
Axial play	0	0.005 or less
Dynamic friction torque, (N · cm)	0.5~4.9	~1.5
Spacer ball	None	
Factory packed grease	NSK grease PS2	
Internal spatial volume of nut (cm <sup>3</sup> )	1.6	

Ball screw No.		Stroke	
		Nominal	Maximum (L <sub>1</sub> -Nut length)
Preloaded (MPFD)	Precise clearance (MSFD)		
<b>W1601MA-1PY-C3Z2</b>	<b>W1601MA-2Y-C3T2</b>	50	99
<b>W1601MA-3PY-C3Z2</b>	<b>W1601MA-4Y-C3T2</b>	100	149
<b>W1602MA-1PY-C3Z2</b>	<b>W1602MA-2Y-C3T2</b>	150	199
<b>W1602MA-3PY-C3Z2</b>	<b>W1602MA-4Y-C3T2</b>	200	249
<b>W1603MA-1PY-C3Z2</b>	<b>W1603MA-2Y-C3T2</b>	300	349

Screw shaft length			Lead accuracy			Shaft run-out **	Mass (Kg)	Permissible rotational speed N (min <sup>-1</sup> )	
								Supporting condition	
L <sub>1</sub>	L <sub>2</sub>	L <sub>3</sub>	T	e <sub>p</sub>	v <sub>a</sub>		Fixed - Simple support	Fixed - Fixed	
139	154	221	0	0.010	0.008	0.020	0.41	3000	3000
189	204	271	0	0.010	0.008	0.020	0.48	3000	3000
239	254	321	0	0.012	0.008	0.030	0.55	3000	3000
289	304	371	0	0.012	0.008	0.030	0.62	3000	3000
389	404	471	0	0.013	0.010	0.035	0.77	3000	3000

- Remarks
1. We recommend NSK support unit WBK12-01A (square type, fixed side), WBK12S-01 (square type, simple support side), and WBK12-11 (round type, fixed side).
  2. NSK grease PS2 is recommended. The amount for replenishing should be about 50% of the nut internal space capacity.
  3. Permissible rotational speed is determined by a d · n value and a critical speed. See page B509. Root diameter of screw shaft (dr) is 14.6 mm.

Unit: mm