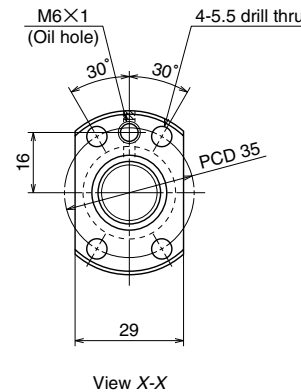


Unit: mm



Ball screw specifications		
Product classification	Preloaded	Precise clearance
Shaft dia. X Lead / Direction of turn	16×2.5/Right	
Preload / Ball recirculation	P preload / Deflector	
Ball dia. / Ball circle dia.	1.588/16.4	
Effective turns of balls	1×4	
Accuracy grade / Preload / Axial play	C3/Z	C3/T
Basic load rating (N)	Dynamic C_a	3510
	Static C_{0a}	8450
Axial play	0	0.005 or less
Dynamic friction torque, (N·cm)	0.5~4.9	~1.5
Spacer ball	None	
Factory packed grease	NSK grease PS2	
Internal spatial volume of nut (cm ³)	1.6	

Ball screw No.		Stroke	
		Nominal	Maximum (L ₁ -Nut length)
Preloaded (MPFD)	Precise clearance (MSFD)		
W1601MA-5PY-C3Z2.5	W1601MA-6Y-C3T2.5	50	95
W1601MA-7PY-C3Z2.5	W1601MA-8Y-C3T2.5	100	145
W1602MA-5PY-C3Z2.5	W1602MA-6Y-C3T2.5	150	195
W1602MA-7PY-C3Z2.5	W1602MA-8Y-C3T2.5	200	245
W1603MA-3PY-C3Z2.5	W1603MA-4Y-C3T2.5	300	345

Screw shaft length			Lead accuracy			Shaft run-out **	Mass (Kg)	Permissible rotational speed N (min ⁻¹)	
								Supporting condition	
L ₁	L ₂	L ₃	T	e _p	v _u		Fixed - Simple support	Fixed - Fixed	
139	154	221	0	0.010	0.008	0.020	0.42	3000	3000
189	204	271	0	0.010	0.008	0.020	0.49	3000	3000
239	254	321	0	0.012	0.008	0.030	0.57	3000	3000
289	304	371	0	0.012	0.008	0.030	0.64	3000	3000
389	404	471	0	0.013	0.010	0.035	0.79	3000	3000

- Remarks
1. We recommend NSK support unit WBK12-01A (square type, fixed side), WBK12S-01 (square type, simple support side), and WBK12-11(round type, fixed side).
 2. NSK grease PS2 is recommended. The amount for replenishing should be about 50% of the nut internal space capacity.
 3. Permissible rotational speed is determined by a $d \cdot n$ value and a critical speed. See page B509. Root diameter of screw shaft (dr) is 14.6 mm.

Unit: mm