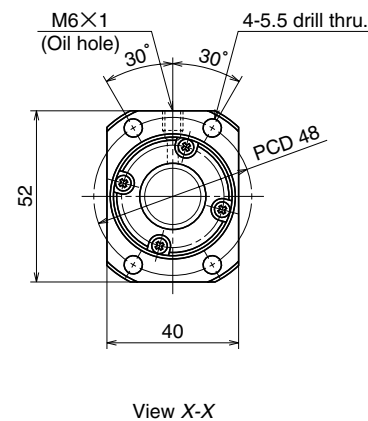


Unit: mm



Ball screw specifications		
Product classification	Preloaded	Precise clearance
Shaft dia. X Lead / Direction of turn	20×40/Right	
Preload / Ball recirculation	P preload / End cap	
Ball dia. / Ball circle dia.	3.175/20.75	
Effective turns of balls	0.7×2	
Accuracy grade/ Preload / Axial play	C5/Z	C5/T
Basic load rating (N)	Dynamic C_a	4490
	Static C_{0a}	8640
Axial play	0	0.005 or less
Dynamic friction torque, (N·cm)	2.0~11.8	~2.9
Spacer ball	None	
Factory packed grease	NSK grease LR3	
Internal spatial volume of nut (cm ³)	2.8	

Ball screw No.		Stroke	
		Nominal	Maximum (L ₁ -Nut length)
Preloaded (UPFC)	Precise clearance (USFC)		
W2005FA-5PGX-C5Z40	W2005FA-6GX-C5T40	400	465
W2007FA-5PGX-C5Z40	W2007FA-6GX-C5T40	600	665
W2009FA-5PGX-C5Z40	W2009FA-6GX-C5T40	800	865
W2011FA-5PGX-C5Z40	W2011FA-6GX-C5T40	1000	1065
W2013FA-1PGX-C5Z40	W2013FA-2GX-C5T40	1200	1265
W2017FA-1PGX-C5Z40	W2017FA-2GX-C5T40	1600	1665

- Remarks
1. We recommend NSK support unit WBK15-01A (square type, fixed side), WBK15S-01 (square type, simple support side), and WBK15-11 (round type, fixed side).
 2. NSK grease LR3 is recommended. The amount for replenishing should be about 50% of nut internal space capacity.
 3. Nut does not have a seal.
 4. Permissible rotational speed is determined by a $d \cdot n$ value and a critical speed. See page B509. Root diameter of screw shaft (dr) is 17.4 mm.

Unit: mm

Screw shaft length			Lead accuracy			Shaft run-out **	Mass (Kg)	Permissible rotational speed N (min ⁻¹)	
L ₁	L ₂	L ₃	T	e _p	v _u			Supporting condition	
								Fixed - Simple support	Fixed - Fixed
506	535	620	0	0.030	0.023	0.050	1.7	3000	3000
706	735	820	0	0.035	0.025	0.085	2.2	3000	3000
906	935	1020	0	0.040	0.027	0.110	2.7	3000	3000
1106	1135	1220	0	0.046	0.030	0.110	3.1	2170	3000
1306	1335	1420	0	0.054	0.035	0.150	3.6	1550	2160
1706	1735	1820	0	0.065	0.040	0.230	4.6	910	1270