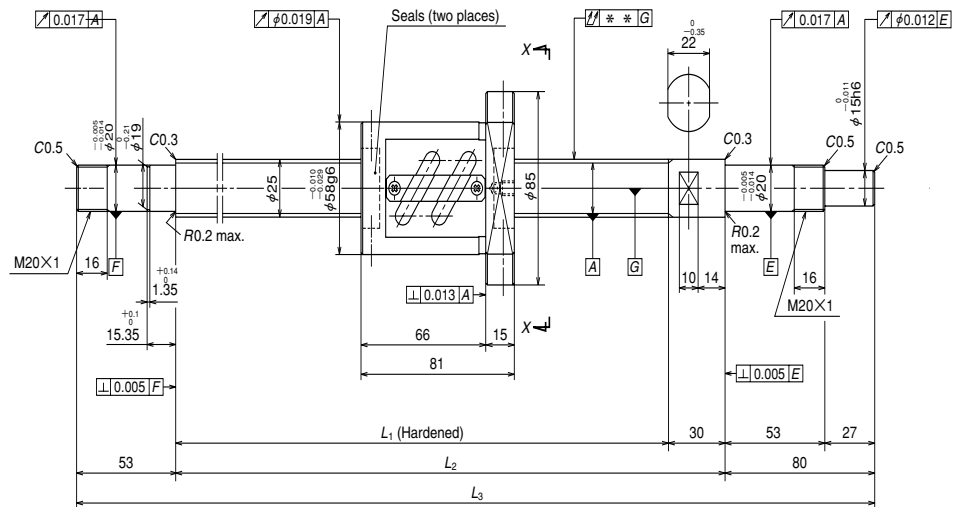


### A Series: Finished shaft end

(Fine lead) Dia. 25, Lead 10

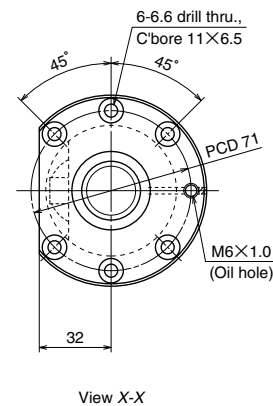


### Nut models: PFT

**NSK**

φ25×10

Unit: mm



Ball screw specifications		
Shaft dia. X Lead / Direction of turn	25×10/Right	
Preload / Ball recirculation	P preload / Return tube	
Ball dia. / Ball circle dia.	4.762/25.5	
Effective turns of balls	1.5×2	
Accuracy grade / Preload	C5/Z	
Basic load rating (N)	Dynamic $C_a$	11600
	Static $C_{0a}$	19000
Preload (N)	585	
Dynamic friction torque, median, (N·cm)	13.8	
Spacer ball	Yes	
Factory packed grease	<b>Refer to Remarks 2.</b>	
Internal spatial volume of nut (cm <sup>3</sup> )	9.5	

Ball screw No.	Stroke		Screw shaft length		
	Nominal	Maximum (L <sub>1</sub> -Nut length)	L <sub>1</sub>	L <sub>2</sub>	L <sub>3</sub>
<b>W2503SA-4P-C5Z10</b>	250	289	370	400	533
<b>W2505SA-4P-C5Z10</b>	450	489	570	600	733
<b>W2507SA-4P-C5Z10</b>	650	689	770	800	933
<b>W2509SA-2P-C5Z10</b>	850	889	970	1000	1133
<b>W2511SA-3P-C5Z10</b>	1050	1089	1170	1200	1333
<b>W2514SA-1P-C5Z10</b>	1350	1389	1470	1500	1633

Lead accuracy			Shaft run-out **	Mass (Kg)	Permissible rotational speed N (min <sup>-1</sup> )	
T	e <sub>p</sub>	v <sub>u</sub>			Supporting condition	
					Fixed - Simple support	Fixed - Fixed
-0.009	0.025	0.020	0.050	3.2	2800	2800
-0.014	0.030	0.023	0.060	3.8	2800	2800
-0.018	0.035	0.025	0.075	4.5	2800	2800
-0.023	0.040	0.027	0.090	5.2	2800	2800
-0.028	0.046	0.030	0.120	5.9	2340	2800
-0.035	0.054	0.035	0.150	6.9	1470	2050

Remarks 1. We recommend NSK support unit WBK20-01A (square type, fixed side), WBK20S-01 (square type, simple support side), and WBK20-11 (round type, fixed side).

2. Only rust preventive agent is applied at time of delivery. Please apply lubricant (oil or grease) before use.

3. Permissible rotational speed is determined by a  $d \cdot n$  value and a critical speed. See page B509.

Root diameter of screw shaft (dr) is 20.5 mm.