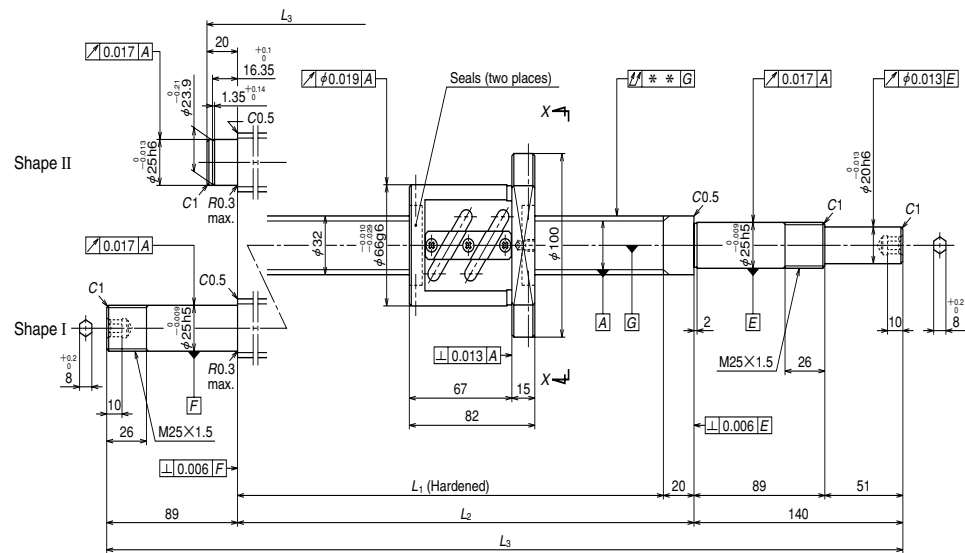


A Series: Finished shaft end

(Fine lead) Dia. 32, Lead 8



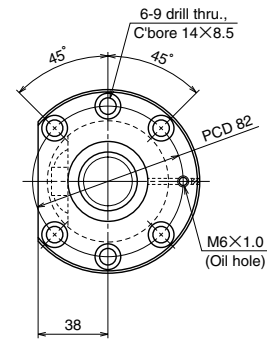
Nut models: ZFT

NSK

φ 32×8



Unit: mm



View X-X

Ball screw specifications		
Shaft dia. x Lead / Direction of turn	32 x 8 / Right	
Preload / Ball recirculation	Z preload / Return tube	
Ball dia. / Ball circle dia.	4.762/32.5	
Effective turns of balls	2.5 x 1	
Accuracy grade / Preload	C5/Z	
Basic load rating (N)	Dynamic C_a	17500
	Static C_{0a}	41000
Preload (N)	1320	
Dynamic friction torque, median, (N·cm)	31.0	
Spacer ball	None	
Factory packed grease	Refer to Remarks 2.	
Internal spatial volume of nut (cm ³)	13	

Ball screw No.	Stroke		Screw shaft length		
	Nominal	Maximum (L ₁ -Nut length)	L ₁	L ₂	L ₃
W3203SA-5Z-C5Z8	250	298	380	400	560
W3205SA-5Z-C5Z8	450	498	580	600	760
W3207SA-5Z-C5Z8	650	698	780	800	1029
W3209SA-5Z-C5Z8	850	898	980	1000	1229
W3214SA-5Z-C5Z8	1350	1398	1480	1500	1729

- Remarks 1. We recommend NSK support unit WBK25DF-31 (round type).
 2. **Only rust preventive agent is applied at time of delivery. Please apply lubricant (oil or grease) before use.**
 3. Permissible rotational speed is determined by a $d \cdot n$ value and a critical speed. See page B509.
 Root diameter of screw shaft (dr) is 25.7 mm.

Unit: mm

Left side shaft end	Lead accuracy			Shaft run-out **	Mass (Kg)	Permissible rotational speed N (min ⁻¹)	
	T	e _p	v _u			Supporting condition	
						Fixed - Simple support	Fixed - Fixed
II	-0.009	0.025	0.020	0.050	4.7	2180	—
II	-0.014	0.030	0.023	0.060	5.8	2180	—
I	-0.019	0.035	0.025	0.090	7.2	2180	2180
I	-0.024	0.040	0.027	0.090	8.3	2180	2180
I	-0.036	0.054	0.035	0.150	11.1	1920	2180