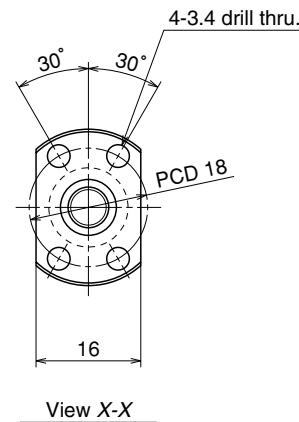


Unit: mm



Ball screw specifications		
Product classification	Preloaded	Precise clearance
Shaft dia. X Lead / Direction of turn	6×1/Right	
Preload / Ball recirculation	P preload / Deflector	
Ball dia. / Ball circle dia.	0.800/6.2	
Effective turns of balls	1×3	
Accuracy grade / Preload / Axial play	C3/Z	C3/T
Basic load rating (N)	Dynamic C_a	575
	Static C_{0a}	925
Axial play	0	0.005 or less
Dynamic friction torque, (N·cm)	~1.3	~0.3
Spacer ball	None	
Factory packed grease	NSK grease PS2	

Ball screw No.		Stroke	
		Nominal	Maximum (L ₁ -Nut length)
Preloaded (MPFD)	Precise clearance (MSFD)		
W0600MA-1PY-C3Z1	W0600MA-2Y-C3T1	40	50
W0601MA-1PY-C3Z1	W0601MA-2Y-C3T1	70	80
W0601MA-3PY-C3Z1	W0601MA-4Y-C3T1	100	110

- Remarks
- We recommend NSK support unit WBK06-01A (square type, fixed side), and WBK06-11 (round type, fixed side).
 - NSK grease PS2 is recommended. Apply to the screw shaft surface when replenishing.
 - Nut does not have a seal.
 - Permissible rotational speed is determined by a $d \cdot n$ value and a critical speed. See page B509. Root diameter of screw shaft (dr) is 5.2 mm.

Unit: mm

Screw shaft length			Lead accuracy			Shaft run-out **	Mass (Kg)	Permissible rotational speed N (min ⁻¹)
L_1	L_2	L_3	T	e_p	v_u			Supporting condition
								Fixed - Free
65	75	105	0	0.008	0.008	0.015	0.039	3000
95	105	135	0	0.008	0.008	0.020	0.045	3000
125	135	165	0	0.010	0.008	0.025	0.051	3000