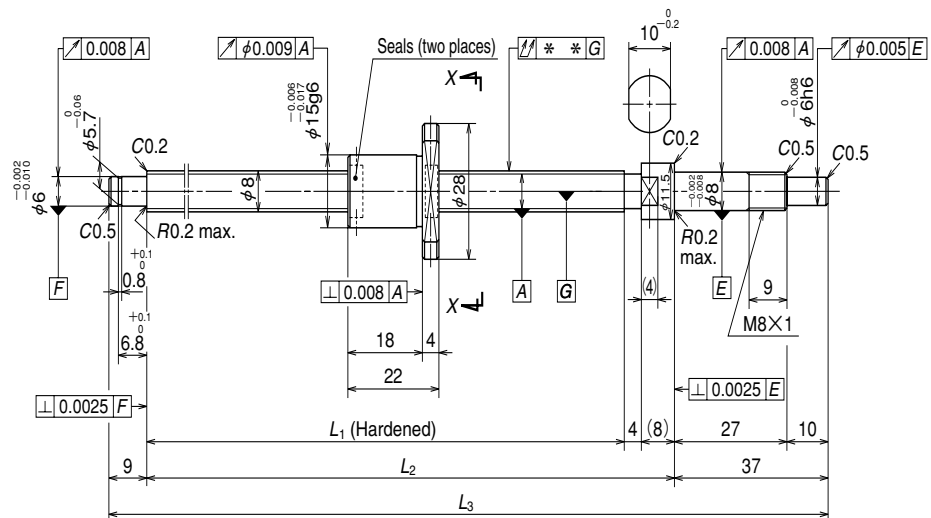


### A Series: Finished shaft end

(Fine lead) Dia. 8, Lead 1.5

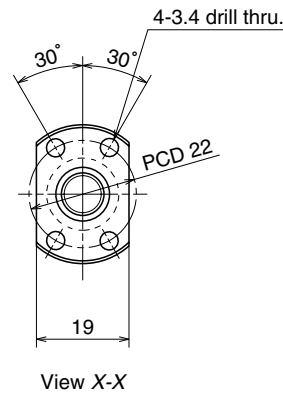


### Nut models: MPFD, MSFD

**NSK**  
 $\phi 8 \times 1.5$



Unit: mm



Ball screw specifications		
Product classification	Preloaded	Precise clearance
Shaft dia. X Lead / Direction of turn	8 × 1.5 / Right	
Preload / Ball recirculation	P preload / Deflector	
Ball dia. / Ball circle dia.	1.000 / 8.3	
Effective turns of balls	1 × 3	
Accuracy grade / Preload / Axial play	C3/Z	C3/T
Basic load rating (N)	Dynamic $C_a$	1080
	Static $C_{0a}$	1980
Axial play	0	0.005 or less
Dynamic friction torque, (N · cm)	~2.0	~0.5
Spacer ball	None	
Factory packed grease	NSK grease PS2	

Ball screw No.		Stroke	
		Nominal	Maximum ( $L_1$ -Nut length)
Preloaded (MPFD)	Precise clearance (MSFD)		
<b>W0800MA-3PY-C3Z1.5</b>	<b>W0800MA-4Y-C3T1.5</b>	40	58
<b>W0801MA-5PY-C3Z1.5</b>	<b>W0801MA-6Y-C3T1.5</b>	70	88
<b>W0801MA-7PY-C3Z1.5</b>	<b>W0801MA-8Y-C3T1.5</b>	100	118
<b>W0802MA-3PY-C3Z1.5</b>	<b>W0802MA-4Y-C3T1.5</b>	150	168

- Remarks
- We recommend NSK support unit WBK08-01A (square type, fixed side), WBK08S-01 (square type, simple support side), and WBK08-11 (round type, fixed side).
  - NSK grease PS2 is recommended. Apply to the screw shaft surface when replenishing.
  - Permissible rotational speed is determined by a  $d \cdot n$  value and a critical speed. See page B509. Root diameter of screw shaft (dr) is 7.0 mm.

Unit: mm

Screw shaft length			Lead accuracy			Shaft run-out **	Mass (Kg)	Permissible rotational speed N (min <sup>-1</sup> )
$L_1$	$L_2$	$L_3$	$T$	$e_p$	$v_u$			Supporting condition
80	92	138	0	0.008	0.008	0.025	0.082	3000
110	122	168	0	0.010	0.008	0.030	0.093	3000
140	152	198	0	0.010	0.008	0.030	0.10	3000
190	202	248	0	0.010	0.008	0.035	0.12	3000