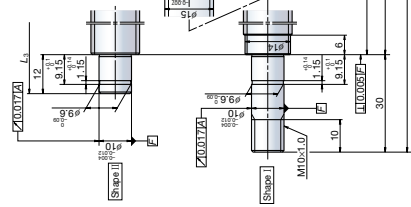


Screw shaft $\phi 15$
Lead 5, 10



Ball screw specification

Preload type	Enlarge ball preload (P-preload)
Ball diameter/screw shaft root diameter	2.778/12.6
Accuracy grade/axial play	C5/0
Factory pre-packed grease	NSK grease LR3

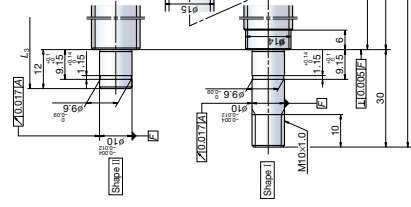
Recommended support unit

WBK12-01B	(square, fixed side)
WBK12S-01B	(square, simple side)
WBK12-11	(round, fixed side)
*WBK10-01B	(square, fixed side)
WBK10-11	(round, fixed side)

Reference number	Screw shaft diameter d	Lead ℓ	Basic load ratings (N)		Stroke		Nut length L	Screw shaft dimensions				Lead accuracy		Shaft runout C	Dynamic preload torque (N·cm) ¹⁾	Permissible rotational speed (min) ²⁾		Left shaft end (opposite driven side)
			Dynamic C_d	Static C_0	Nominal L_1	Max. L_2		L_1	L_2	L_3	L_4	Target value T	Error e_p			Variation Δe_p	Fixed-Simple	
PSS150N1D0261	15	5	5 460	8 730	100	146	300	139	154	211	0	0.020	0.018	0.035	0.2	6.9	5 000	Shape II
PSS150N1D0261								189	204	261								
PSS150N1D0361								289	304	361								
PSS150N1D0461								389	404	461								
PSS150N1D0561								489	504	561								
PSS150N1D0661								589	604	661								
PSS150N1D0761								689	704	761								
PSS150N1D0879								789	804	879								
PSS150N1D0979								889	904	979								
PSS150N1D1179								1 089	1 104	1 179								
PSS150N1D0261	15	10	5 460	8 730	200	246	43	139	154	211	0	0.020	0.018	0.035	0.6	7.4	5 000	Shape II
PSS150N1D0361								189	204	261								
PSS150N1D0461								289	304	361								
PSS150N1D0561								389	404	461								
PSS150N1D0661								489	504	561								
PSS150N1D0761								589	604	661								
PSS150N1D0879								689	704	761								
PSS150N1D0979								789	804	879								
PSS150N1D1179								1 089	1 104	1 179								

*1. Indicates ball screw preload control value. About 2.0 N·cm of torque is added due to high performance seal. *2. Contact NSK if permissible rotational speed is to be exceeded. *3. Service temperature range is -20°C to 80°C. *4. WBK 10-01B and WBK 10-11 are for shape I.

Screw shaft $\phi 15$
Lead 20, 30



Ball screw specification

Preload type	Enlarge ball preload (P-preload)
Ball diameter/screw shaft root diameter	3.175/12.2
Accuracy grade/axial play	C5/0
Factory pre-packed grease	NSK grease LR3

Recommended support unit

WBK12-01B	(square, fixed side)
WBK12S-01B	(square, simple side)
WBK12-11	(round, fixed side)
*WBK10-01B	(square, fixed side)
WBK10-11	(round, fixed side)

Reference number	Screw shaft diameter d	Lead ℓ	Basic load ratings (N)	Stroke	Nut length L	Screw shaft dimensions				Lead accuracy		Shaft runout C	Dynamic preload torque (N·cm) ¹⁾	Permissible rotational speed (min) ²⁾		Left shaft end (opposite driven side)				
						Dynamic C_d	Static C_0	Nominal L_1	Max. L_2	L_1	L_2			L_3	L_4		Target value T	Error e_p	Variation Δe_p	Fixed-Simple
PSS1520N1D0261	15	20	5 070	8 730	100	135	186	204	261	18	0.020	0.018	0.035	0.8	8.8	5 000	Shape II			
PSS1520N1D0361																		286	304	361
PSS1520N1D0461																		386	404	461
PSS1520N1D0561																		486	504	561
PSS1520N1D0661																		586	604	661
PSS1520N1D0761																		686	704	761
PSS1520N1D0879																		786	804	879
PSS1520N1D0979																		886	904	979
PSS1520N1D1179																		1 086	1 104	1 179
PSS1530N1D0361																		15	30	5 070
PSS1530N1D0461	430	454	511																	
PSS1530N1D0561	530	554	611																	
PSS1530N1D0661	630	654	711																	
PSS1530N1D0761	730	754	811																	
PSS1530N1D0879	830	854	929																	
PSS1530N1D0979	930	954	1 029																	
PSS1530N1D1179	1 130	1 154	1 229																	

*1. Indicates ball screw preload control value. About 2.0 N·cm of torque is added due to high performance seal. *2. Contact NSK if permissible rotational speed is to be exceeded. *3. Service temperature range is -20°C to 80°C. *4. WBK 10-01B and WBK 10-11 are for shape I.