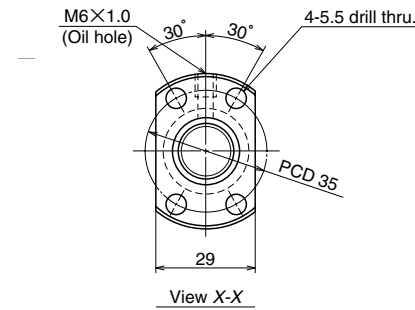
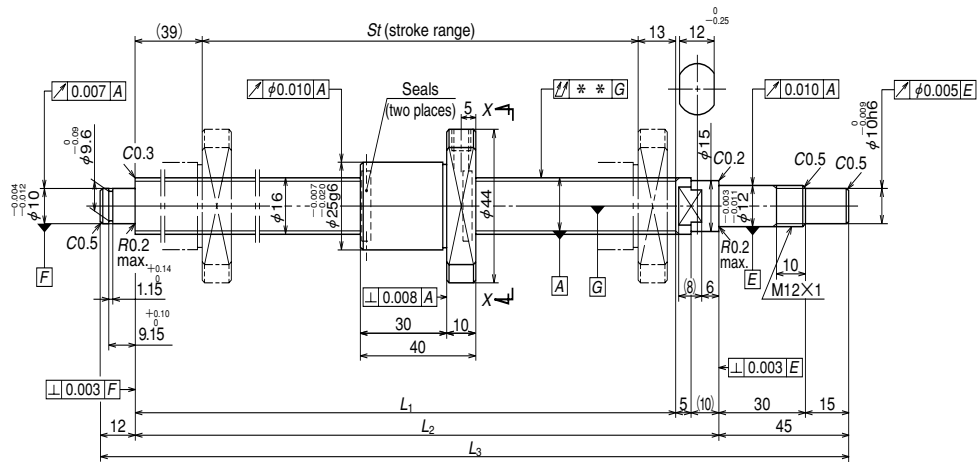


Unit: mm



Ball screw specifications		
Shaft dia. x Lead / Direction of turn	16 x 2 / Right	
Preload / Ball recirculation	P preload / Deflector	
Ball dia. / Ball circle dia.	1.588 / 16.4	
Effective turns of balls	1 x 4	
Accuracy grade / Preload	C3/Z	
Basic load rating (N)	Dynamic C_a	2870
	Static C_{0a}	6250
Axial play	0	
Dynamic friction torque, (N · cm)	0.5 ~ 4.9	
Spacer ball	None	
Factory packed grease	Refer to the remarks 1. below.	
Internal spatial volume of nut (cm ³)	1.6	

Ball screw No.	Stroke		Thread length		
	Nominal	Maximum	L_1	L_2	L_3
W1601KA-3PY-C3Z2	100	137	189	204	261
W1603KA-1PY-C3Z2	300	337	389	404	461

Lead accuracy			Shaft run-out **	Mass (Kg)	Permissible rotational speed N (min ⁻¹)
T	e_p	v_u			Supporting condition
0	0.010	0.008	0.020	0.46	3000
0	0.013	0.010	0.035	0.75	3000

- Remarks 1. Only rust preventive agent is applied at time of delivery. Please apply lubricant (oil or grease) before use. NSK Clean Grease LG2 is recommended.
 2. Permissible rotational speed is determined by a $d \cdot n$ value and a critical speed. See page B509. Root diameter of screw shaft (dr) is 14.6 mm.