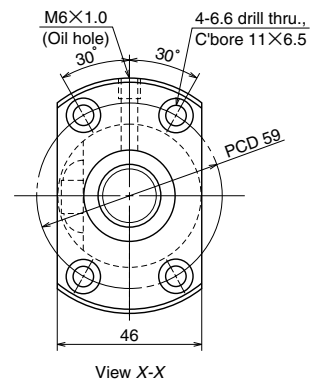
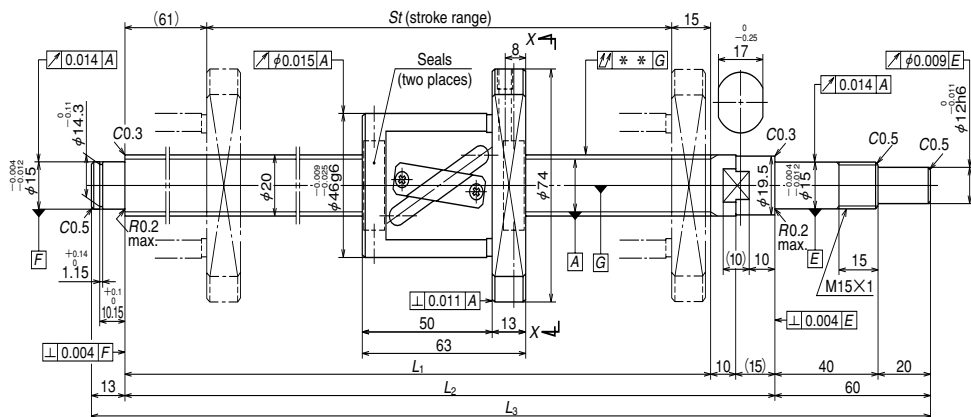


Unit: mm



Ball screw specifications		
Shaft dia. x Lead / Direction of turn	20 x 20 / Right	
Preload / Ball recirculation	P preload / Return tube	
Ball dia. / Ball circle dia.	3.969 / 21	
Effective turns of balls	1.5 x 1	
Accuracy grade / Preload	C5/Z	
Basic load rating (N)	Dynamic C_a	5760
	Static C_{0a}	9370
Axial play	0	
Dynamic friction torque, (N·cm)	2.0 ~ 11.8	
Spacer ball	None	
Factory packed grease	Refer to the remarks 1. below.	
Internal spatial volume of nut (cm ³)	4.2	

Ball screw No.	Stroke		Thread length		
	Nominal	Maximum	L_1	L_2	L_3
W2005KA-3P-C5Z20	400	434	510	535	608
W2007KA-3P-C5Z20	600	634	710	735	808
W2011KA-3P-C5Z20	1000	1034	1110	1135	1208

Lead accuracy			Shaft run-out **	Mass (Kg)	Permissible rotational speed N (min ⁻¹)	
T	e_p	v_u			Supporting condition	
					Fixed - Simple support	
0	0.030	0.023	0.050	2.0	3000	
0	0.035	0.025	0.085	2.5	3000	
0	0.046	0.030	0.110	3.4	2160	

Remarks 1. Only rust preventive agent is applied at time of delivery. Please apply lubricant (oil or grease) before use. NSK Clean Grease LG2 is recommended.
 2. Permissible rotational speed is determined by a $d \cdot n$ value and a critical speed. See page B509. Root diameter of screw shaft (dr) is 16.9 mm.