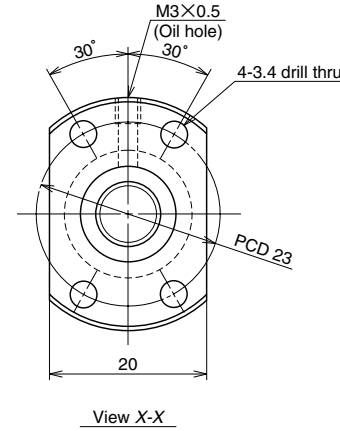
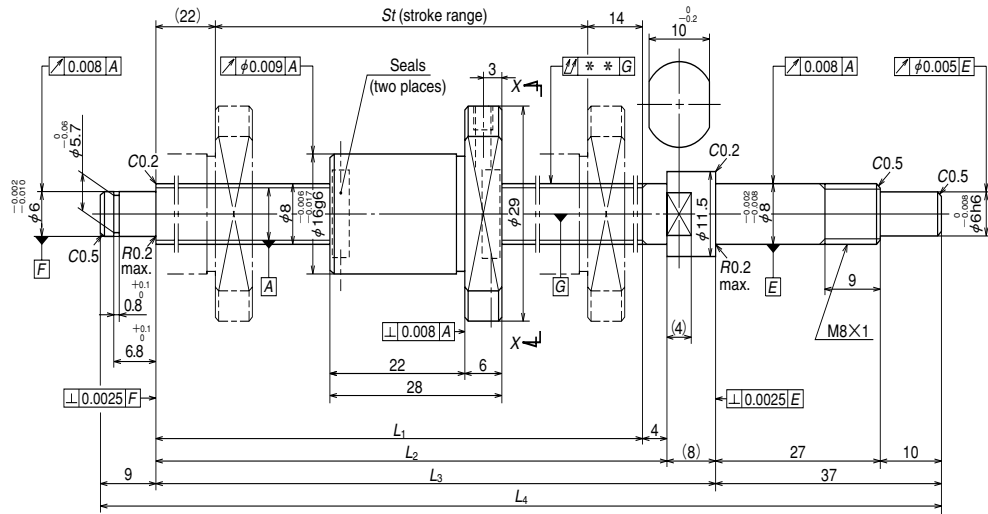


Unit: mm



Ball screw specifications		
Shaft dia. x Lead / Direction of turn	8 x 2 / Right	
Preload / Ball recirculation	P preload / Deflector	
Ball dia. / Ball circle dia.	1.200 / 8.3	
Effective turns of balls	1 x 3	
Accuracy grade / Preload	C3/Z	
Basic load rating (N)	Dynamic $C_a$	1080
	Static $C_{0a}$	1630
Axial play	0	
Dynamic friction torque, (N · cm)	~2.0	
Spacer ball	None	
Factory packed grease	Refer to the remarks 1. below.	

Ball screw No.	Stroke		Thread length			
	Nominal	Maximum	$L_1$	$L_2$	$L_3$	$L_4$
<b>W0802KA-5PY-C3Z2</b>	150	154	190	194	202	248

Lead accuracy			Shaft run-out **	Mass (Kg)	Permissible rotational speed N (min <sup>-1</sup> )
$T$	$e_p$	$v_u$			Supporting condition
0	0.010	0.008	0.035	0.13	Fixed - Simple support 3000

Remarks 1. Only rust preventive agent is applied at time of delivery. Please apply lubricant (oil or grease) before use. NSK Clean Grease LG2 is recommended.  
2. Permissible rotational speed is determined by a  $d \cdot n$  value and a critical speed. See page B509. Root diameter of screw shaft (dr) is 6.9 mm.