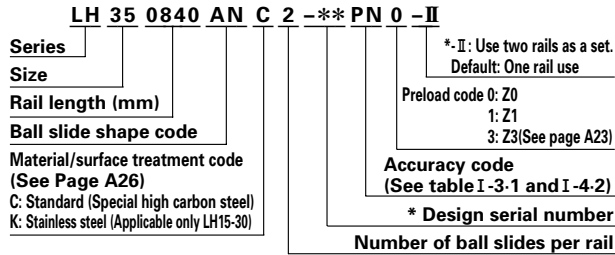


Dimensions of LH Series (Preloaded assembly)

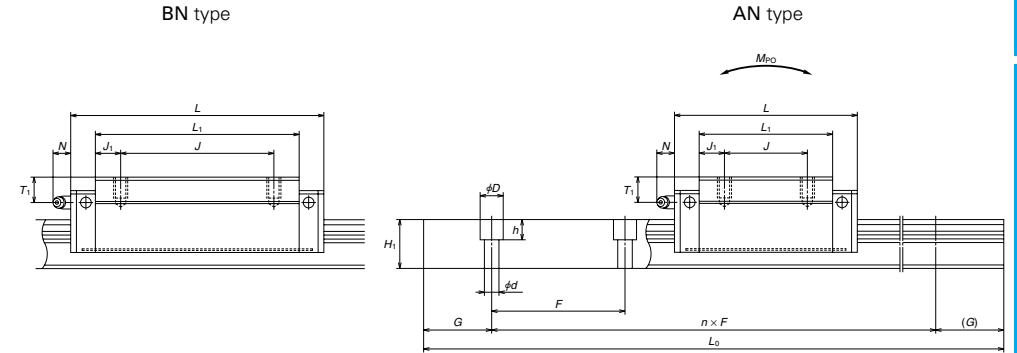
LH-AL, AN (High load type)
LH-BL, BN (Super high load type)



* Please note that we assign the design number, and omit the last code (II) that indicates a use of two rails as a set to finalize the reference number as product identification.

Table. I-5-1

Model No.	Assembly			Ball slide												
	Height H	E	W ₂	Width W	Length L	Mounting hole			B ₁	L ₁	J ₁	K	T	Grease fitting		
						B	J	M × pitch × l						Hole size	T ₁	N
LH15AN	28	4.6	9.5	34	55	26	26	M4×0.7×6	4	39	6.5	23.4	8	φ3	8.5	3.3
LH15BN					74					58	16					
LH20AN	30	5	12	44	69.8	32	36	M5×0.8×6	6	50	7	25	12	M6×0.75	5	11
LH20BN					91.8		50			72	11					
LH25AL	36				79	35	35	M6×1×6	6.5	58	11.5	29	12	M6×0.75	6	11
LH25AN	40	7	12.5	48	35	35	M6×1×9	33		33	33	10				
LH25BL	36				107	50	M6×1×6	29		29	29	6				
LH25BN	40						M6×1×9	33		33	33	10				
LH30AL	42				85.6	40	40	M8×1.25×8	10	59	9.5	33	14	M6×0.75	7	11
LH30AN	45	9	16	60	40	40	M8×1.25×10	36		36	36	10				
LH30BL	42				124.6	60	M8×1.25×8	33		33	33	7				
LH30BN	45						M8×1.25×10	36		36	36	10				
LH35AL	48				109	50	50	M8×1.25×8	10	80	15	38.5	15	M6×0.75	8	11
LH35AN	55	9.5	18	70	50	50	M8×1.25×12	45.5		45.5	45.5	15				
LH35BL	48				143	72	M8×1.25×8	38.5		38.5	38.5	8				
LH35BN	55						M8×1.25×12	45.5		45.5	45.5	15				
LH45AN	70	14	20.5	86	139	60	60	M10×1.5×17	13	105	22.5	56	17	Rc1/8	20	13
LH45BN					171	80	80			137	28.5					
LH55AN	80	15	23.5	100	163	75	75	M12×1.75×18	12.5	126	25.5	65	18	Rc1/8	21	13
LH55BN					201	95	95			164	34.5					
LH65AN	90	16	31.5	126	193	76	70	M16×2×20	25	147	38.5	74	23	Rc1/8	19	13
LH65BN					253	120	120			207	43.5					



Unit: mm

Rail							Basic load rating					Ball dia.	Weight	
Width W ₁	Height H ₁	Pitch F	Mounting bolt hole d × D × h	B ₃	G (recomm ended)	Max. length L _{0max} () for stainless	Dynamic C (N)	Static C ₀	Static moment M _{RO} M _{FO} M _{VO} (N-m)			D _w	Ball slide (kg)	Rail (kg/m)
15	15	60	4.5×7.5×5.3	7.5	20	2000 (1800)	10800	20700	108	95	80	3.175	0.18	1.6
20	18	60	6×9.5×8.5	10	20	3960 (3500)	17400	32500	219	185	155	3.968	0.33	2.6
23	22	60	7×11×9	11.5	20	3960 (3500)	25600	46000	360	320	267	4.762	0.46	3.6
28	26	80	9×14×12	14	20	4000 (3500)	34500	71000	555	725	610	5.556	0.69	5.2
34	29	80	9×14×12	17	20	4000	47500	80500	950	755	630	6.350	1.2	7.2
45	38	105	14×20×17	22.5	22.5	3990	81000	140000	2140	1740	1460	7.937	3.0	12.3
53	44	120	16×23×20	26.5	30	3960	119000	198000	3600	3000	2510	9.525	4.7	16.9
63	53	150	18×26×22	31.5	35	3900	146000	264000	4850	5150	4350	11.906	6.1	24.3

The basic dynamic load rating is a load that furnishes 50 km rating fatigue life; it is a vertical and constant load to the ball slide mounting surface.

When converting the basic dynamic load rating C to the dynamic load rating C₁₀₀ for 100 km rating fatigue life, divide the C by 1.26

LH-EL (High load type)
LH-GL (Super high load type)

LH 35 0840 EL C 2 - PN 0 -II**

Series: LH
Size: 35
Rail length (mm): 0840
Ball slide shape code: EL
Material/surface treatment code (See Page A26): C
C: Standard (Special high carbon steel)
K: Stainless steel (Applicable only LH15-30)

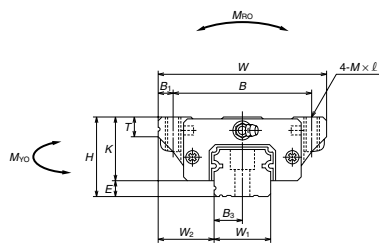
*-II: Use two rails as a set.
Default: One rail use

Preload code 0: Z0
1: Z1
3: Z3(See page A23)

Accuracy code (See table I-3-1 and I-4-2)

* Design serial number

Number of ball slides per rail



* Please note that we assign the design number, and omit the last code (II) that indicates a use of two rails as a set to finalize the reference number as product identification.

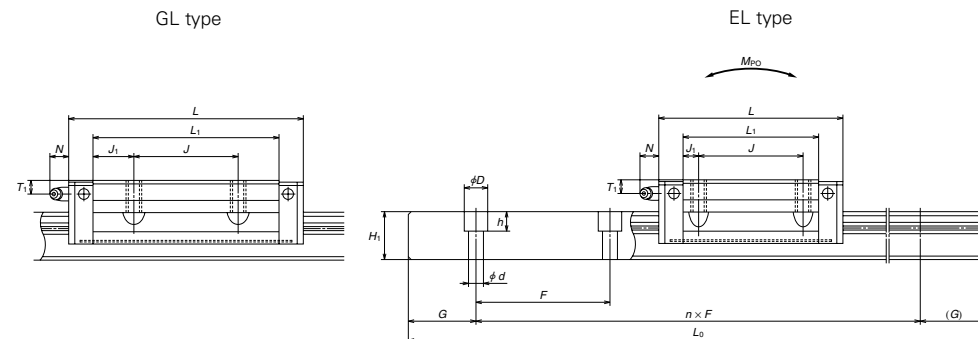
Table. I-5-2

Model No.	Assembly			Ball slide												
	Height H	E	W ₂	Width W	Length L	Mounting hole					Grease fitting					
						B	J	M × pitch × l	B ₁	L ₁	J ₁	K	T	Hole size	T ₁	N
LH15EL LH15GL	24	4.6	16	47	55 74	38	30	M5×0.8×8	4.5	39 58	4.5 14	19.4	8	φ3	4.5	3.3
LH20EL LH20GL	30	5	21.5	63	69.8 91.8	53	40	M6×1×10	5	50 72	5 16	25	10	M6×0.75	5	11
LH25EL LH25GL	36	7	23.5	70	79 107	57	45	M8×1.25×16 (M8×1.25×12)	6.5	58 86	6.5 20.5	29	11 (12)	M6×0.75	6	11
LH30EL LH30GL	42	9	31	90	98.6 124.6	72	52	M10×1.5×18 (M10×1.5×15)	9	72 98	10 23	33	11 (15)	M6×0.75	7	11
LH35EL LH35GL	48	9.5	33	100	109 143	82	62	M10×1.5×20	9	80 114	9 26	38.5	12	M6×0.75	8	11
LH45EL LH45GL	60	14	37.5	120	139 171	100	80	M12×1.75×24	10	105 137	12.5 28.5	46	13	Rc1/8	10	13
LH55EL LH55GL	70	15	43.5	140	163 201	116	95	M14×2×28	12	126 164	15.5 34.5	55	15	Rc1/8	11	13
LH65EL LH65GL	90	16	53.5	170	193 253	142	110	M16×2×24	14	147 207	18.5 48.5	74	23	Rc1/8	19	13
LH85GL	110	18	65	215	303	185	140	M20×2.5×30	15	243	51.5	92	30	Rc1/8	23	13

※Dimensions in parenthesis are for items made of stainless steel.

※LH85 is the item on order.

※The external appearance of stainless steel ball slides differs from those of standard material ball slide.



Unit: mm

Rail							Basic load rating					Ball dia.	Weight	
Width W ₁	Height H ₁	Pitch F	Mounting bolt hole d × D × h	B ₃	G (recomm ended)	Max. length L _{0max} () for stainless	Dynamic C (N)	Static C ₀	Static moment (N·m)			D _w	Ball slide (kg)	Rail (kg/m)
15	15	60	4.5×7.5×5.3	7.5	20	2000 (1800)	10800	20700	108	95	80	3.175	0.17	1.6
20	18	60	6×9.5×8.5	10	20	3960 (3500)	17400	32500	219	185	155	3.968	0.45	2.6
23	22	60	7×11×9	11.5	20	3960 (3500)	25600	46000	360	320	267	4.762	0.63	3.6
28	26	80	9×14×12	14	20	4000 (3500)	35500	63000	600	505	425	5.556	1.2	5.2
34	29	80	9×14×12	17	20	4000	47500	80500	950	755	630	6.350	1.7	7.2
45	38	105	14×20×17	22.5	22.5	3990	81000	140000	2140	1740	1460	7.937	3.0	12.3
53	44	120	16×23×20	26.5	30	3960	119000	198000	3600	3000	2510	9.525	5.0	16.9
63	53	150	18×26×22	31.5	35	3900	181000	281000	6150	4950	4150	11.906	10.0	24.3
85	65	180	24×35×28	42.5	45	2520	345000	585000	17300	17400	14600	14.287	24.5	38.3

The basic dynamic load rating is a load that furnishes 50 km rating fatigue life; it is a vertical and constant load to the ball slide mounting surface.

When converting the basic dynamic load rating C to the dynamic load rating C₁₀₀ for 100 km rating fatigue life, divide the C by 1.26

LH Series (preloaded assembly)

LH-EM
LH-FL (High load type)
LH-GM (Super high load type)
LH-HL

LH 35 0840 FL C 2 -** PN 0 -II

Series: LH 35 0840 FL C 2 -** PN 0 -II
 Size: 35
 Rail length (mm): 840
 Ball slide shape code: FL
 Material/surface treatment code (See Page A26): C
 C: Standard (Special high carbon steel)
 K: Stainless steel (Applicable only LH15-30)

*.II: Use two rails as a set.
 Default: One rail use

Preload code 0: Z0
 1: Z1
 3: Z3(See page A23)

Accuracy code (See table I-3-1 and I-4-2)
 * Design serial number

Number of ball slides per rail

* Please note that we assign the design number, and omit the last code (II) that indicates a use of two rails as a set to finalize the reference number as product identification.

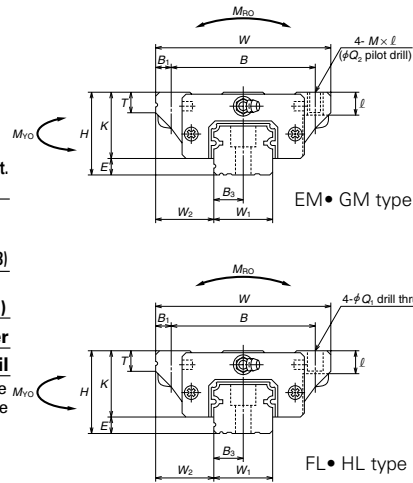


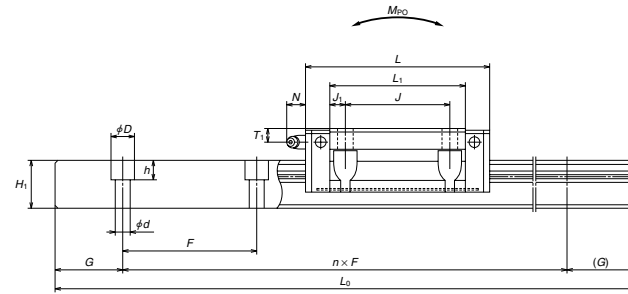
Table. I-5-3

Model No.	Assembly			Ball slide													
	Height H	E	W ₂	Width W	Length L	Mounting hole				B ₁	L ₁	J ₁	K	T	Grease fitting		
						B	J	M × pitch × l	Q ₂						Hole size	T ₁	N
LH15FL	24	4.6	16	47	55	38	30	4.5×7	—	4.5	39	4.5	19.4	8	φ3	4.5	3.3
LH15EM					74	—	58	14	—		—	—					
LH15HL	30	5	21.5	63	69.8	53	40	4.5×7	—	5	50	5	25	10	M6×0.75	5	11
LH15GM					91.8	—	72	16	—		—	—					
LH20FL	30	5	21.5	63	69.8	53	40	6×9.5	—	5	50	5	25	10	M6×0.75	5	11
LH20EM					91.8	—	72	16	—		—	—					
LH20HL	36	7	23.5	70	79	57	45	M6×1.0×9.5	5.3	6.5	58	6.5	29	11	M6×0.75	6	11
LH20GM					107	—	86	20.5	—		—	—					
LH25FL	36	7	23.5	70	79	57	45	7×10 (7×11.5)	—	6.5	58	6.5	29	11	M6×0.75	6	11
LH25EM					107	—	86	20.5	—		—	—					
LH25HL	42	9	31	90	98.6	72	52	M8×1.25×10	6.8	9	72	10	33	11	M6×0.75	7	11
LH25GM					124.6	—	98	23	—		—	—					
LH30FL	42	9	31	90	98.6	72	52	9×12 (9×14.5)	—	9	72	10	33	11	M6×0.75	7	11
LH30EM					124.6	—	98	23	—		—	—					
LH30HL	48	9.5	33	100	109	82	62	M10×1.5×12	8.6	9	72	10	33	11	M6×0.75	7	11
LH30GM					143	—	98	23	—		—	—					
LH35FL	48	9.5	33	100	109	82	62	9×13	—	9	80	9	38.5	12	M6×0.75	8	11
LH35EM					143	—	98	23	—		—	—					
LH35HL	60	14	37.5	120	139	100	80	M10×1.5×13	8.6	10	105	12.5	46	13	Rc1/8	10	13
LH35GM					171	—	137	28.5	—		—	—					
LH45FL	60	14	37.5	120	139	100	80	11×15	—	10	105	12.5	46	13	Rc1/8	10	13
LH45EM					171	—	137	28.5	—		—	—					
LH45HL	70	15	43.5	140	163	116	95	M12×1.75×15	10.5	12	126	15.5	55	15	Rc1/8	11	13
LH45GM					201	—	164	34.5	—		—	—					
LH55FL	70	15	43.5	140	163	116	95	14×18	—	12	126	15.5	55	15	Rc1/8	11	13
LH55EM					201	—	164	34.5	—		—	—					
LH55HL	90	16	53.5	170	193	142	110	M14×2×18	12.5	14	147	18.5	74	23	Rc1/8	19	13
LH55GM					253	—	207	48.5	—		—	—					
LH65FL	90	16	53.5	170	193	142	110	16×24	—	14	147	18.5	74	23	Rc1/8	19	13
LH65EM					253	—	207	48.5	—		—	—					
LH65HL	110	18	65	215	303	185	140	M16×2×24	14.6	15	243	51.5	92	30	Rc1/8	23	13
LH65GM					303	—	243	51.5	—		—	—					
LH85HL	110	18	65	215	303	185	140	18×30	—	15	243	51.5	92	30	Rc1/8	23	13

*Dimensions in parenthesis are for items made of stainless steel.

*LH85 is the item on order.

*The external appearance of stainless steel ball slides differs from those of standard material ball slide.



Unit: mm

Width W ₁	Height H ₁	Pitch F	Rail					Basic load rating					Ball dia. D _w	Weight	
			Mounting bolt hole d × D × h	B ₃	G (recomm. ended)	aMax. length L _{0max} () for stainless	Dynamic C (N)	Static C ₀ (N)	Static moment			Ball slide (kg)		Rail (kg/m)	
									M _{RO}	M _{PO}	M _{VO}				
15	15	60	4.5×7.5×5.3	7.5	20	2000 (1800)	10800	20700	108	95	80	3.175	0.17	1.6	
20	18	60	6×9.5×8.5	10	20	3960 (3500)	17400	32500	219	185	155	3.968	0.45	2.6	
23	22	60	7×11×9	11.5	20	3960 (3500)	25600	46000	360	320	267	4.762	0.63	3.6	
28	26	80	9×14×12	14	20	4000 (3500)	35500	63000	600	505	425	5.556	1.2	5.2	
34	29	80	9×14×12	17	20	4000	47500	80500	950	755	630	6.35	1.7	7.2	
45	38	105	14×20×17	22.5	22.5	3990	81000	140000	2140	1740	1460	7.937	3	12.3	
53	44	120	16×23×20	26.5	30	3990	99000	187000	2860	3000	2520	9.525	3.9	16.9	
63	53	150	18×26×22	31.5	35	3900	119000	198000	3600	3000	2510	11.906	5	24.3	
85	65	180	24×35×28	42.5	45	2520	146000	264000	4850	5150	4350	14.287	6.5	38.3	

The basic dynamic load rating is a load that furnishes 50 km rating fatigue life; it is a vertical and constant load to the ball slide mounting surface.

When converting the basic dynamic load rating C to the dynamic load rating C₁₀₀ for 100 km rating fatigue life, divide the C by 1.26

Dimensions of LH Series (Interchangeable ball slide)

LAH-AN (High load type)
LAH-BN (Super high load type)

• See Page A27 Reference Number of each interchangeable part.

LA H 30 AN S Z - K

Interchangeable ball slide code
Series
Size
Ball slide shape code (See Table I-2-2)
Material code
Default Standard material S: Stainless steel
(Applicable only LH15-30)

Option code
-K: Equipped with standard NSK K1
-F: Fluoride low temperature chrome platin + standard grease
-F50: Fluoride low temperature chrome platin + LG2 grease

Preload code
Default: Fine clearance
Z: Slight preload

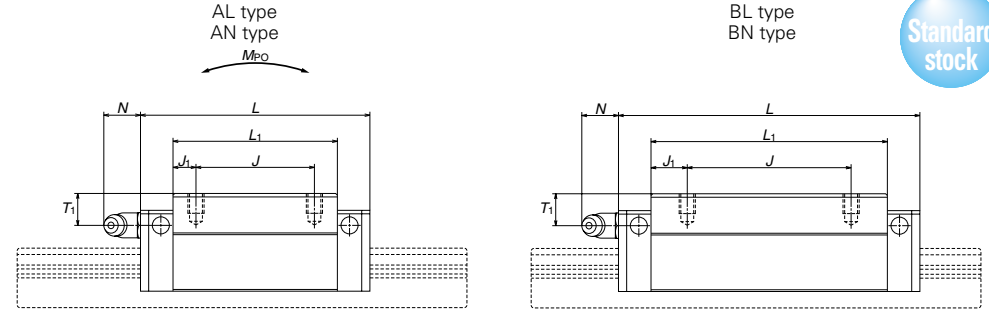
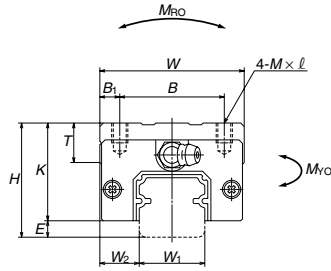


Table. I-5-4

Model No.	Assembly			Ball slide										
	Height H	E	W ₂	Width W	Length L	Mounting hole			B ₁	L ₁	J ₁	K	T	
						B	J	M × pitch × l						
LAH15AN	28	4.6	9.5	34	55	26	26	M4×0.7×6	4	39	6.5	23.4	8	
LAH15BN					74					58	16			
LAH20AN	30	5	12	44	69.8	32	36	M5×0.8×6	6	50	7	25	12	
LAH20BN					91.8					72	11			
LAH25AL	36	7	12.5	48	79	35	35	M6×1×6 M6×1×9 M6×1×6 M6×1×9	6.5	58	11.5	29	12	
LAH25AN	40				33									
LAH25BL	36				29									
LAH25BN	40				33									
LAH30AL	42	9	16	60	85.6	40	40	M8×1.25×8 M8×1.25×10 M8×1.25×8 M8×1.25×10	10	59	9.5	33	14	
LAH30AN	45				36									
LAH30BL	42				33									
LAH30BN	45				36									
LAH35AL	48	9.5	18	70	109	50	50	M8×1.25×8 M8×1.25×12 M8×1.25×8 M8×1.25×12	10	80	15	38.5	15	
LAH35AN	55				45.5									
LAH35BL	48				38.5									
LAH35BN	55				45.5									
LAH45AN	70	14	20.5	86	139	60	60	M10×1.5×17	13	105	22.5	56	17	
LAH45BN					171					137	28.5			
LAH55AN	80	15	23.5	100	163	75	75	M12×1.75×18	12.5	126	25.5	65	18	
LAH55BN					201					164	34.5			
LAH65AN	90	16	31.5	126	193	76	70	M16×2×20	25	147	38.5	74	23	
LAH65BN					253		120			207	43.5			

Unit: mm

Grease fitting			Basic load rating					Ball dia. D _w	Weight Ball slide (kg)
			Dynamic		Static				
Hole size	T ₁	N	C (N)	C ₀	M _{ro}	M _{po} (N·m)	M _{vo}		
φ 3	8.5	3.3	10800	20700	108	95	80	3.175	0.18
			14600	32000	166	216	181		
M6×0.75	5	11	17400	32500	219	185	155	3.968	0.33
			23500	50500	340	420	355		
M6×0.75	6 10 6 10	11	25600	46000	360	320	267	4.762	0.46
			34500	71000	555	725	610		0.55
									0.69
									0.82
M6×0.75	7 10 7 10	11	31000	51500	490	350	292	5.556	0.69
			46000	91500	870	1030	865		0.77
									1.16
									1.3
Rc1/8	20	13	81000	140000	2140	1740	1460	7.937	3.0
			99000	187000	2860	3000	2520		3.9
Rc1/8	21	13	119000	198000	3600	3000	2510	9.525	4.7
			146000	264000	4850	5150	4350		6.1
Rc1/8	19	13	181000	281000	6150	4950	4150	11.906	7.7
			235000	410000	8950	10100	8450		10.8

The basic dynamic load rating is a load that furnishes 50 km rating fatigue life; it is a vertical and constant load to the ball slide mounting surface. When converting the basic dynamic load rating C to the dynamic load rating C₁₀₀ for 100 km rating fatigue life, divide the C by 1.26

LAH-EL (High load type)
LAH-GL (Super high load type)

• See Page A27 Reference Number of each interchangeable part.

LA H 30 EL S Z - K

Interchangeable ball slide code
Series
Size
Ball slide shape code (See Table I-2-2)
Material code
Default Standard material S: Stainless steel
(Applicable only LH15-30)

Option code
-K: Equipped with standard NSK K1
-F: Fluoride low temperature chrome platin + standard grease
-F50: Fluoride low temperature chrome platin + LG2 grease

Preload code
Default: Fine clearance
Z: Slight preload

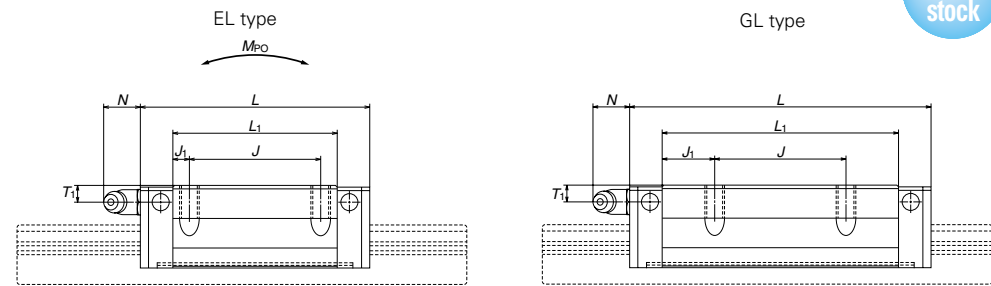
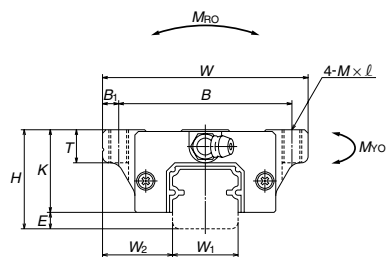


Table. I-5-5

Model No.	Assembly			Ball slide									
	Height H	E	W ₂	Width W	Length L	Mounting hole			B ₁	L ₁	J ₁	K	T
						B	J	M × pitch × ℓ					
LAH15EL	24	4.6	16	47	55	38	30	M5×0.8×8	4.5	39	4.5	19.4	8
LAH15GL					74					58	14		
LAH20EL	30	5	21.5	63	69.8	53	40	M6×1×10	5	50	5	25	10
LAH20GL					91.8					72	16		
LAH25EL	36	7	23.5	70	79	57	45	M8×1.25×16 (M8×1.25×12)	6.5	58	6.5	29	11
LAH25GL					107					86	20.5		(12)
LAH30EL	42	9	31	90	98.6	72	52	M10×1.5×18 (M10×1.5×15)	9	72	10	33	11
LAH30GL					124.6					98	23		(15)
LAH35EL	48	9.5	33	100	109	82	62	M10×1.5×20	9	80	9	38.5	12
LAH35GL					143					114	26		
LAH45EL	60	14	37.5	120	139	100	80	M12×1.75×24	10	105	12.5	46	13
LAH45GL					171					137	28.5		
LAH55EL	70	15	43.5	140	163	116	95	M14×2×28	12	126	15.5	55	15
LAH55GL					201					164	34.5		
LAH65EL	90	16	53.5	170	193	142	110	M16×2×24	14	147	18.5	74	23
LAH65GL					253					207	48.5		

※Dimensions in parenthesis are for items made of stainless steel.
※The external appearance of stainless steel ball slides differs from those of standard material ball slide.

Unit: mm

Grease fitting			Basic load rating					Ball dia. D _w	Weight Ball slide (kg)
			Dynamic		Static				
Hole size	T ₁	N	C	C ₀	M _{Ro}	M _{Po}	M _{Vo}	D _w	Ball slide (kg)
			(N)			(N·m)			
φ3	4.5	3.3	10800	20700	108	95	80	3.175	0.17
			14600	32000	166	216	181		0.25
M6×0.75	5	11	17400	32500	219	185	155	3.968	0.45
			23500	50500	340	420	355		0.65
M6×0.75	6	11	25600	46000	360	320	267	4.762	0.63
			34500	71000	555	725	610		0.93
M6×0.75	7	11	35500	63000	490	505	425	5.556	1.2
			46000	91500	870	1030	865		1.6
M6×0.75	8	11	47500	80500	950	755	630	6.350	1.7
			61500	117000	1380	1530	1280		2.4
Rc1/8	10	13	81000	140000	2140	1740	1460	7.937	3.0
			99000	187000	2860	3000	2520		3.9
Rc1/8	11	13	119000	198000	3600	3000	2510	9.525	5.0
			146000	264000	4850	5150	4350		6.5
Rc1/8	19	13	181000	281000	6150	4950	4150	11.906	10.0
			235000	410000	8950	10100	8450		14.1

The basic dynamic load rating is a load that furnishes 50 km rating fatigue life; it is a vertical and constant load to the ball slide mounting surface.
When converting the basic dynamic load rating C to the dynamic load rating C₁₀₀ for 100 km rating fatigue life, divide the C by 1.26

LH Series (interchangeable part)

LAH-EM
LAH-FL (High load type)
LAH-HL
LAH-GM (Super high load type)

• See Page A27 Reference Number of each interchangeable part.

LA H 30 FL S Z - K

Interchangeable ball slide code
Series
Size
Ball slide shape code (See Table I-2-2)
Material code
Default Standard material
S: Stainless steel
(Applicable only LH15-30)

Option code
-K: Equipped with standard NSK K1
-F: Fluoride low temperature chrome platin + standard grease
-F50: Fluoride low temperature chrome platin + LG2 grease

Preload code
Default: Fine clearance
Z: Slight preload

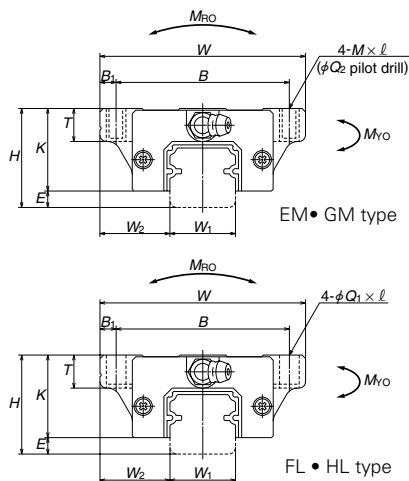
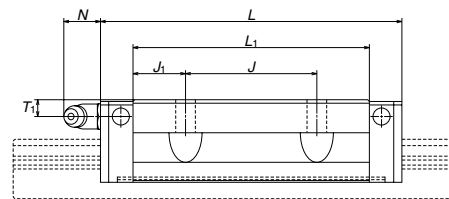


Table. I-5-6

Model No.	Assembly			Ball slide										
	Height H	E	W ₂	Width W	Length L	Mounting hole				B ₁	L ₁	J ₁	K	T
						B	J	Q ₁ × l M × pitch × l	Q ₂					
LAH15FL LAH15EM LAH15HL LAH15GM	24	4.6	16	47	55	38	30	4.5×7 M5×0.8×7	—	4.5	39	4.5	19.4	8
74					4.5×7 M5×0.8×7			4.4	58		14			
LAH20FL LAH20EM LAH20HL LAH20GM	30	5	21.5	63	69.8	53	40	6×9.5 M6×1×9.5	5.3	5	50	5	25	10
91.8					6×9.5 M6×1×9.5			5.3	72		16			
LAH25FL LAH25EM LAH25HL LAH25GM	36	7	23.5	70	79	57	45	7×10 (7×11.5) M8×1.25×10 (M8×1.25×11.5)	—	6.5	58	6.5	29	11 (12)
107					7×10 (7×11.5) M8×1.25×10 (M8×1.25×11.5)			6.8	86		20.5			
LAH30FL LAH30EM LAH30HL LAH30GM	42	9	31	90	98.6	72	52	9×12 (9×14.5) M10×1.5×12 (M10×1.5×14.5)	—	9	72	10	33	11 (15)
124.6					9×12 (9×14.5) M10×1.5×12 (M10×1.5×14.5)			8.6	98		23			
LAH35FL LAH35EM LAH35HL LAH35GM	48	9.5	33	100	109	82	62	9×13 M10×1.5×13	—	9	80	9	38.5	12
143					9×13 M10×1.5×13			8.6	114		26			
LAH45FL LAH45EM LAH45HL LAH45GM	60	14	37.5	120	139	100	80	11×15 M12×1.75×15	—	10	105	12.5	46	13
171					11×15 M12×1.75×15			10.5	137		28.5			
LAH55FL LAH55EM LAH55HL LAH55GM	70	15	43.5	140	163	116	95	14×18 M14×2×18	—	12	126	15.5	55	15
201					14×18 M14×2×18			12.5	164		34.5			
LAH65FL LAH65EM LAH65HL LAH65GM	90	16	53.5	170	193	142	110	16×24 M16×2×24	—	14	147	18.5	74	23
253					16×24 M16×2×24			14.6	207		48.5			

※Dimensions in parenthesis are for items made of stainless steel.

※The external appearance of stainless steel ball slides differs from those of standard material ball slide.



Unit: mm

Grease fitting Hole size	T ₁	N	Basic load rating					Ball dia. D _w	Weight Ball slide (kg)
			Dynamic C (N)	Static C ₀	Static moment				
					M _{RO}	M _{FO}	M _{YO}		
φ 3	4.5	3.3	10800	20700	108	95	80	3.175	0.17
			14600	32000	166	216	181		
M6×0.75	5	11	17400	32500	219	185	155	3.968	0.45
			23500	50500	340	420	355		
M6×0.75	6	11	25600	46000	360	320	267	4.762	0.63
			34500	71000	555	725	610		
M6×0.75	7	11	35500	63000	600	505	425	5.556	1.2
			46000	91500	870	1030	865		
M6×0.75	8	11	47500	80500	950	755	630	6.35	1.7
			61500	117000	1380	1530	1280		
Rc1/8	10	13	81000	140000	2140	1740	1460	7.937	3
			99000	187000	2860	3000	2520		
Rc1/8	11	13	119000	198000	3600	3000	2510	9.525	5
			146000	264000	4850	5150	4350		
Rc1/8	19	13	181000	281000	6150	4950	4150	11.906	10
			235000	410000	8950	10100	8450		

The basic dynamic load rating is a load that furnishes 50 km rating fatigue life; it is a vertical and constant load to the ball slide mounting surface.

When converting the basic dynamic load rating C to the dynamic load rating C₁₀₀ for 100 km rating fatigue life, divide the C by 1.26