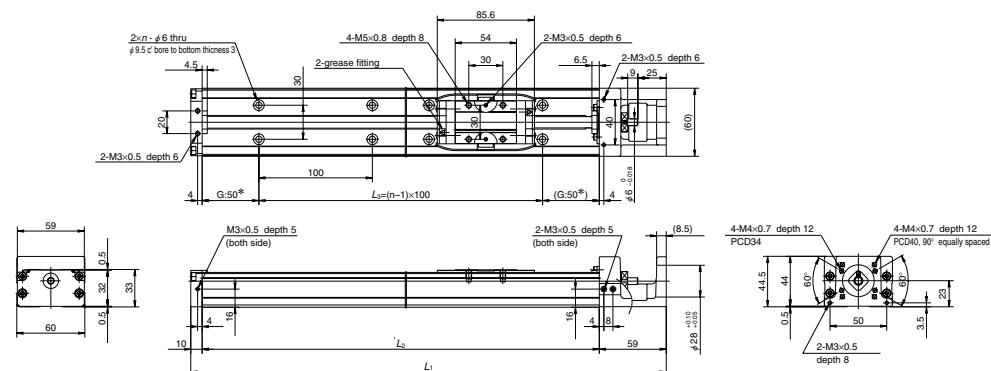


MCH06

Accuracy grade: High grade (H)



Dimension of MCH06 (Single slider)

Reference number	Nominal stroke (mm)	Stroke limit(mm) (K1 is not equipped)	Ball screw lead (mm)	Body length (mm)				Inertia ×10 ⁶ (kg · m ²)	Mass (kg)
				L ₁	L ₂	L ₃	n		
※ MCH06005H05K	50	53 (65)	5	219	150	100	2	2.38	1.8
※ MCH06005H10K		10	3.45						
MCH06010H05K	100	103 (115)	5	269	200	100	2	3.17	2.2
MCH06010H10K		10	4.12						
MCH06020H05K	200	203 (215)	5	369	300	200	3	4.51	3.0
MCH06020H10K		10	5.46						
MCH06030H10K	300	303 (315)	10	469	400	300	4	6.80	3.7
MCH06030H20K		20	10.6						
MCH06040H10K	400	403 (415)	10	569	500	400	5	8.13	4.5
MCH06040H20K		20	11.9						
MCH06050H10K	500	503 (515)	10	669	600	500	6	9.47	5.2
MCH06050H20K		20	13.3						

Dimension of G is 25 instead of 50 for those marked with ※. Items not marked are available from standard stock. Items marked with ★ are designated as "quick delivery item" upon request.

Monocarrier dynamic torque specification (N · cm)

Ball screw lead (mm)	5	
	1.0~4.8	1.1~5.8
	1.6~7.9	

- Frictional resistance of NSK K1 is included in the dynamic torque in the table.
- Grease is packed into ball screw, linear guide parts and support unit.
- Consult NSK for life estimates under large moment loads.

Basic load rating

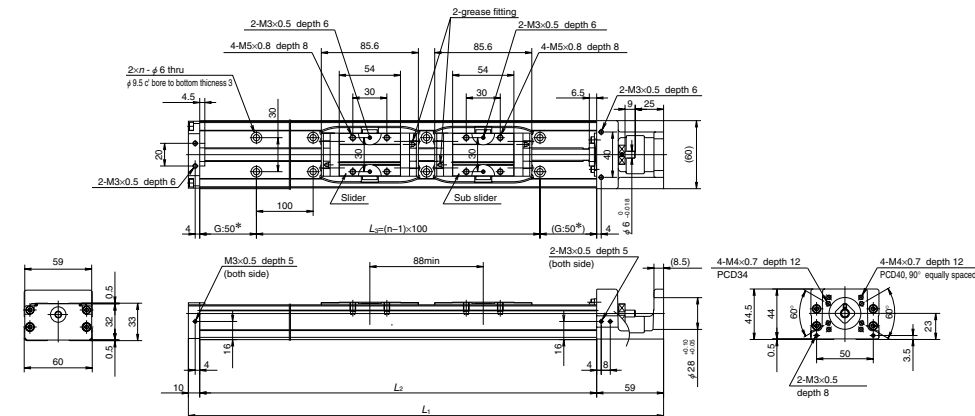
Lead ℓ (mm)	Shaft dia d (mm)	Basic dynamic load rating (N)				Basic static load rating (N)		Support unit Load limit (N)
		Ball screw C _a	linear guides C	Support unit C _a	Rated running distance L _a (km)	Ball screw C _{0a}	Linear guides C ₀	
5	φ 12	3000 (High grade)	22800	4400	5	5410 (High grade)	16300	1450
		3760 (Precision)				6310 (Precision)		
10	φ 12	1930 (High grade)	18100	4400	10	3160 (High grade)	16300	1450
		2260 (Precision)				3780 (Precision)		
20	φ 12	1930 (High grade)	14400	4400	20	3160 (High grade)	16300	1450
		2260 (Precision)				3780 (Precision)		

Basic static moment load of linear guide

Slider	Basic static moment load (N · m)		
	RollingM _{RO}	PitchingM _{PO}	YawingM _{YO}
Single	335	133	133

MCH06 (Double slider)

Accuracy grade: High grade (H)



Dimension of MCH06 (Double slider)

Reference number	Nominal stroke (mm)	Stroke limit(mm) (K1 is not equipped)	Ball screw lead (mm)	Body length (mm)				Inertia ×10 ⁶ (kg · m ²)	Mass (kg)
				L ₁	L ₂	L ₃	n		
★ MCH06010H05D	100	115 (139)	5	369	300	200	3	4.82	3.5
★ MCH06010H10D			10					6.72	
★ MCH06020H05D	200	215 (239)	5	469	400	300	4	8.06	4.2
★ MCH06020H10D			10					15.7	
★ MCH06030H05D	300	315 (339)	5	569	500	400	5	9.40	5.0
★ MCH06030H10D			10					17.0	
★ MCH06040H10D	400	415 (439)	10	669	600	500	6	10.7	5.7
★ MCH06040H20D			20					18.3	

Items not marked are available from standard stock. Items marked with ★ are designated as "quick delivery item" upon request.

Monocarrier dynamic torque specification (N · cm)

Ball screw lead (mm)	5	
	1.2~5.2	1.5~9.6
	2.3~11.8	

- Frictional resistance of NSK K1 is included in the dynamic torque in the table.
- Grease is packed into ball screw, linear guide parts and support unit.
- Consult NSK for life estimates under large moment loads.

Basic load rating

Lead ℓ (mm)	Shaft dia d (mm)	Basic dynamic load rating (N)				Basic static load rating (N)		Support unit Load limit (N)
		Ball screw C _a	linear guides C	Support unit C _a	Rated running distance L _a (km)	Ball screw C _{0a}	Linear guides C ₀	
5	φ 12	3000 (High grade)	22800	4400	5	5410 (High grade)	16300	1450
		3760 (Precision)				6310 (Precision)		
10	φ 12	1930 (High grade)	18100	4400	10	3160 (High grade)	16300	1450
		2260 (Precision)				3780 (Precision)		
20	φ 12	1930 (High grade)	14400	4400	20	3160 (High grade)	16300	1450
		2260 (Precision)				3780 (Precision)		

Basic static moment load of linear guide

Slider	Basic static moment load (N · m)		
	RollingM _{RO}	PitchingM _{PO}	YawingM _{YO}
Double	770	730	730