

C-II MCM Series

C-II-1 MCM Series Reference Number Coding

[Body]
Reference number : M C M 08 040 H 10 K 0 0
 Monocarrier
 M type: MCM Series
 Nominal size (rail width, Unit: 10mm)
 Stroke (Unit: 10mm)
 Accuracy grade (H: High grade, P: Precision grade)
 NSK management number
 Grease specification: O (standard AS2)
 Clean grease specification: B (LG2)
 Slider specification K: Single slider
 (See page C9) D: Double slider
 Ball screw lead (mm)

[With Option part]
Reference number : M C E 08 040 H 10 K 0 0 K 0 0 0
 E: With MCM option part
 NSK management number
 Sensor unit
 Cover unit
 Motor bracket
 Note : Optional components are available separately.

Table 2-1 Sensor unit (See page C35~38)

Reference number code	Specification	Reference number
0	N/A	—
1	Proximity switch (b-contact 3pieces)	MC - SRxx - 10
2	Proximity switch (a-contact 3pieces)	MC - SRxx - 11
3	Proximity switch (a-contact 1pieces, b-contact 2pieces)	MC - SRxx - 12
4	Photo sensor 3pieces	MC - SRxx - 13

Table 2-2 Cover unit (See page C39~40)

Reference number code	Specification	Reference number
0	N/A	—
1	With top cover	MC - CVxxxx - 01 (02) ※
2	Full cover	MC - CVxxxx - 00

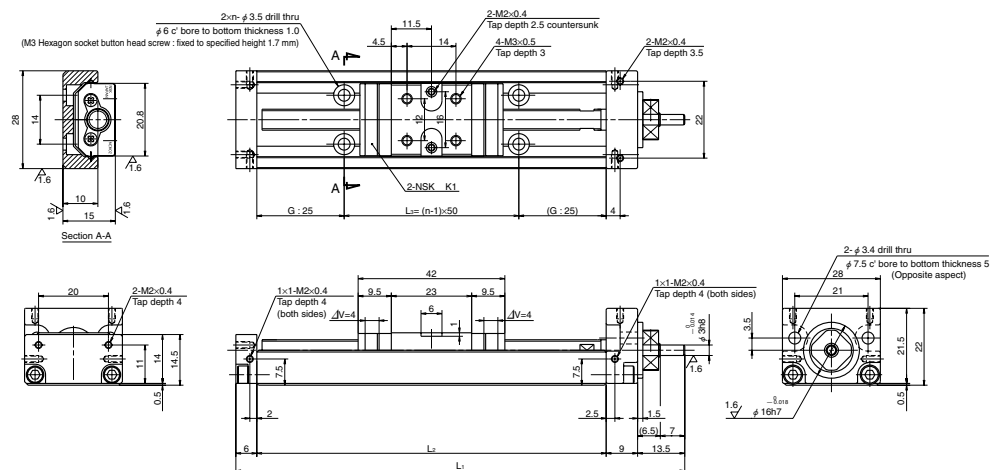
Note ※: Monocarrier "-02" is only used for MCM03

Note xxxxx: Reference number and stroke number

Table 2-3 The reference number of motor bracket

Reference number code	Reference number				
	MCM03	MCM05	MCM06	MCM08	MCM10
0	N/A	N/A	N/A	N/A	N/A
1	MC-BK03-146-00	MC-BK05-145-00	MC-BK06-145-00	MC-BK08-145-00	MC-BK10-170-00
2	MC-BK03-148-01	MC-BK05-146-00	MC-BK06-146-00	MC-BK08-146-00	MC-BK10-170-01
3	MC-BK03-231-00	MC-BK05-148-00	MC-BK06-148-00	MC-BK08-160-00	MC-BK10-190-00
4	—	MC-BK05-160-00	MC-BK06-160-00	MC-BK08-170-00	MC-BK10-270-00
5	—	MC-BK05-250-00	MC-BK06-170-00	MC-BK08-170-01	—
6	—	—	MC-BK06-170-01	MC-BK08-190-00	—
7	—	—	MC-BK06-250-00	MC-BK08-250-00	—
8	—	—	—	MC-BK08-270-00	—

C-II-2 MCM Series dimension table of standard products MCM02



ΔV is thickness of NSK K1

Reference number	Nominal stroke (mm)	Stroke limit (mm)	Ball screw lead (mm)	Body length (mm)			No. of mounting hole n	Inertia x10 ⁻⁷ (kg · m ²)	Mass (kg)
				L ₁	L ₂	L ₃			
MCM02005H01K	50	58	1	128.5	100	50	2	0.93	0.26
MCM02005P01K									
MCM02005H02K			2						
MCM02005P02K									
MCM02010H01K	100	108	1	178.5	150	100	3	1.36	0.32
MCM02010P01K									
MCM02010H02K			2						
MCM02010P02K									
MCM02015H01K	150	158	1	228.5	200	150	4	1.81	0.39
MCM02015P01K									
MCM02015H02K			2						
MCM02015P02K									

Items not marked are available from standard stock.

Monocarrier dynamic torque specification (N · cm)

Ball screw lead (mm)	High grade		Precision
	1	2	0.2~1.6
1	0.1~1.3	0.2~1.6	
2			

- Frictional resistance of NSK K1 is included in the dynamic torque in the table.
- Grease is packed into ball screw, linear guide parts and support unit.
- Consult NSK for life estimates under large moment loads.
- Stroke limit = stroke + (4|margin|>2)

Basic load rating

Lead ℓ (mm)	Shaft dia d (mm)	Basic dynamic load rating (N)				Basic static load rating (N)		Support unit Load limit (N)
		Ball screw C _a	linear guides C	Support unit C _a	Rated running distance L _a (km)	Ball screw C _{0a}	Linear guides C ₀	
1	φ6	340 (High grade)	4910	615	1	555 (High grade)	2120	490
		405 (Precision)				615 (Precision)		
2		340 (High grade)	3900		2	555 (High grade)		
		405 (Precision)				615 (Precision)		

Basic static moment load of linear guide

Slider	Basic static moment load (N · m)		
	RollingM _{RO}	PitchingM _{PO}	YawingM _{YO}
Single	24	8	8