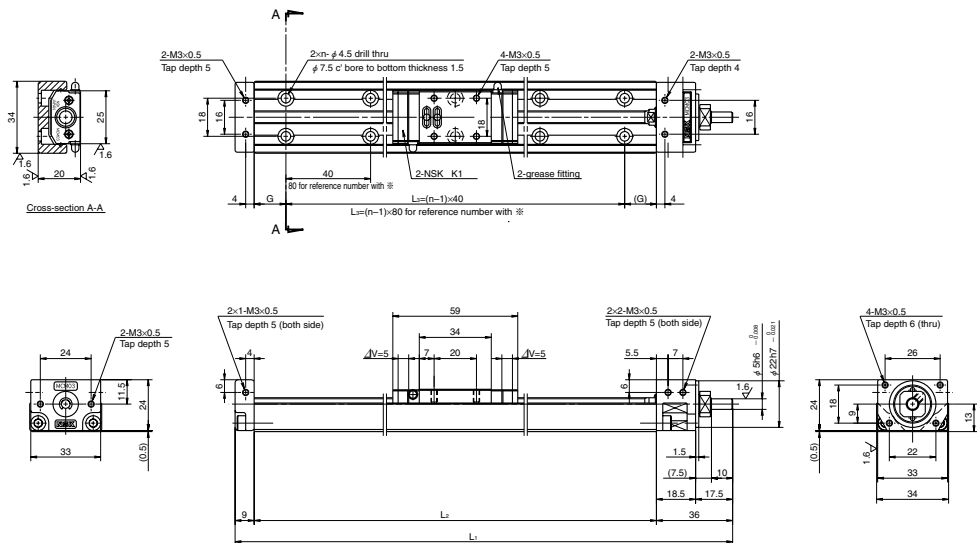


MCM03

Accuracy grade: Precision (P)

Ball screw lead 1 and 2



Dimension of MCM03 (Single slider)

ΔV is thickness of NSK K1

Reference number	Nominal stroke (mm)	Stroke limit(mm) (K1 is not equipped)	Ball screw lead (mm)	Body length (mm)				No. of mounting hole <i>n</i>	Inertia $\times 10^5$ (kg · m ²)	Mass (kg)
				L ₁	L ₂	G	L ₃			
※MCM03005P01K00	50	56	1	160	115	17.5	80	2	0.015	0.6
※MCM03005P02K00		(66)	2							
MCM03010P01K00	100	131	1	235	190	15	160	5	0.021	0.7
MCM03010P02K00		(141)	2							
★MCM03015P01K00	150	181	1	285	240	20	200	6	0.025	0.8
★MCM03015P02K00		(191)	2							

Items not marked are available from standard stock.
 Items marked with ★ are designated as "quick delivery item" upon request.
 Bolt hole pitch L₃ on the items marked with ※ is 80 mm.

Monocarrier dynamic torque specification (N · cm)

Ball screw lead (mm)	Torque (N · cm)	
	1	0.2~1.7
2	0.2~1.7	

1. Frictional resistance of NSK K1 is included in the dynamic torque in the table.
2. Grease is packed into ball screw, linear guide parts and support unit.
3. Consult NSK for life estimates under large moment loads.
4. Optional spacer is required, when I put cover unit, sensor unit or the both together in ball screw lead of 1 and 2mm (See page C39).
5. Stroke limit = stroke + (3[margin] × 2)

Basic load rating

Lead (mm)	Shaft dia (mm)	Basic dynamic load rating (N)				Basic static load rating (N)		Support unit Load limit (N)
		Ball screw C _a	linear guides C	Support unit C _a	Rated running distance L _a (km)	Ball screw C _{0a}	Linear guides C ₀	
1	φ6	735	10900	2670	1	1230	4900	1040
2		735	8650		2			

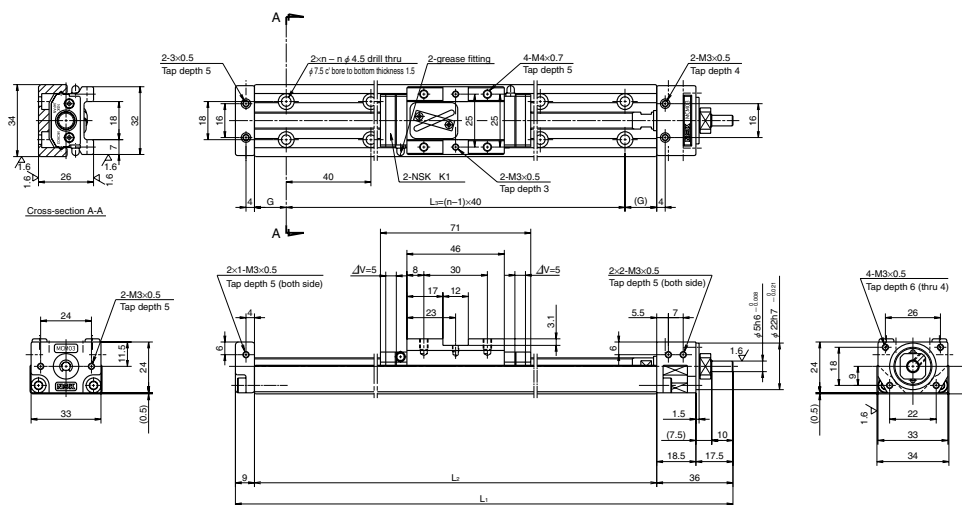
Basic static moment load of linear guide

Slider	Basic static moment load (N · m)		
	RollingM _{RO}	PitchingM _{PO}	YawingM _{YO}
Single	68	28	28

MCM03

Accuracy grade: High grade (H)

Ball screw lead 10 and 12



Dimension of MCM03 (Single slider)

ΔV is thickness of NSK K1

Reference number	Nominal stroke (mm)	Stroke limit(mm) (K1 is not equipped)	Ball screw lead (mm)	Body length (mm)				No. of mounting hole <i>n</i>	Inertia $\times 10^5$ (kg · m ²)	Mass (kg)
				L ₁	L ₂	G	L ₃			
MCM03010H10K00	100	119	10	235	190	15	160	5	0.092	0.7
MCM03010H12K00		(129)	12							
★MCM03015H10K00	150	169	10	285	240	20	200	6	0.105	0.8
★MCM03015H12K00		(179)	12							
★MCM03020H10K00	200	219	10	335	290	25	240	7	0.118	0.9
★MCM03020H12K00		(229)	12							
★MCM03025H10K00	250	269	10	385	340	30	280	8	0.131	1.0
★MCM03025H12K00		(279)	12							

Items not marked are available from standard stock.
 Items marked with ★ are designated as "quick delivery item" upon request.

Monocarrier dynamic torque specification (N · cm)

Ball screw lead (mm)	Torque (N · cm)	
	10	0.3~3.0
12	0.3~3.0	

1. Frictional resistance of NSK K1 is included in the dynamic torque in the table.
2. Grease is packed into ball screw, linear guide parts and support unit.
3. Consult NSK for life estimates under large moment loads.
4. Stroke limit = stroke + (9.5[margin] × 2)

Basic load rating

Lead (mm)	Shaft dia (mm)	Basic dynamic load rating (N)				Basic static load rating (N)		Support unit Load limit (N)
		Ball screw C _a	linear guides C	Support unit C _a	Rated running distance L _a (km)	Ball screw C _{0a}	Linear guides C ₀	
10	φ8	1230	6250	2670	10	1690	6620	1040
12		1230	5880		12			

Basic static moment load of linear guide

Slider	Basic static moment load (N · m)		
	RollingM _{RO}	PitchingM _{PO}	YawingM _{YO}
Single	92	51	51