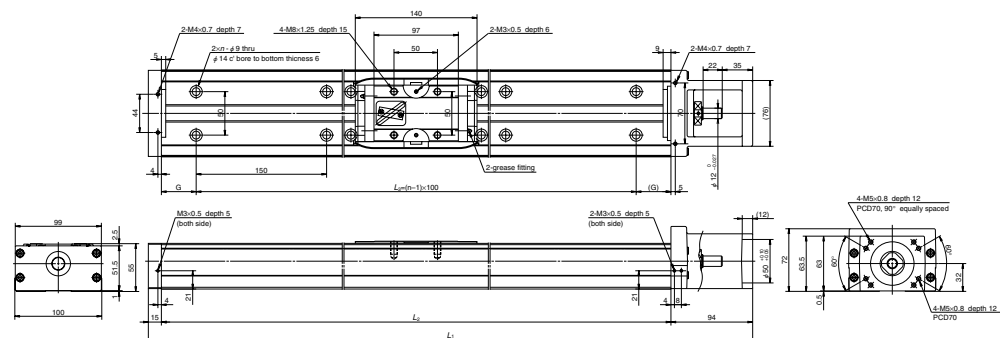


MCH10

Accuracy grade: High grade (H)



Dimension of MCH10 (Single slider)

Reference number	Nominal stroke (mm)	Stroke limit(mm) (K1 is not equipped)	Ball screw lead (mm)	Body length (mm)					Inertia $\times 10^6(\text{kg} \cdot \text{m}^2)$	Mass (kg)
				L ₁	L ₂	G	L ₃	n		
MCH10040H10K	400	426 (442)	10	689	580	65	450	4	62.4	14
MCH10040H20K		20	71.8							
MCH10050H10K	500	526 (542)	10	789	680	40	600	5	74.7	16
MCH10050H20K		20	82.3							
MCH10060H10K	600	626 (642)	10	889	780	15	750	6	84.9	19
MCH10060H20K		20	92.5							
MCH10070H10K	700	726 (742)	10	989	880	65	750	6	95.1	21
MCH10070H20K		20	103							
MCH10080H10K	800	826 (842)	10	1 089	980	40	900	7	105	23
MCH10080H20K		20	113							
MCH10090H20K	900	926(942)	20	1 189	1 080	15	1 050	8	123	25
MCH10100H20K	1 000	1 026(1 042)	20	1 289	1 180	65	1 050	8	133	27
★MCH10110H20K	1 100	1 126(1 142)	20	1 389	1 280	40	1 200	9	143	29
★MCH10120H20K	1 200	1 226(1 242)	20	1 489	1 380	15	1 350	10	154	32

Items not marked are available from standard stock. Items marked with ★ are designated as "quick delivery item" upon request.

Monocarrier dynamic torque specification (N · cm)

Ball screw lead (mm)	Dynamic torque (N · cm)	
	10	2.7~10.8
20	3.1~12.7	

1. Frictional resistance of NSK K1 is included in the dynamic torque in the table.
2. Grease is packed into ball screw, linear guide parts and support unit.
3. Consult NSK for life estimates under large moment loads.

Basic load rating

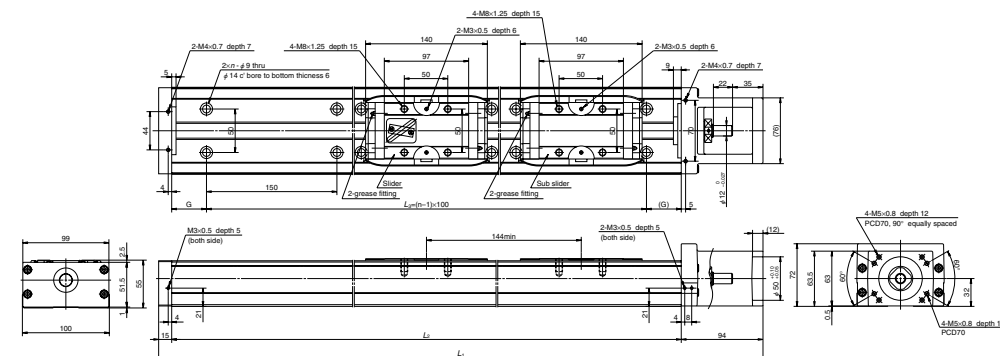
Lead (mm)	Shaft dia (mm)	Basic dynamic load rating (N)				Basic static load rating (N)		Support unit Load limit (N)
		Ball screw C _a	linear guides C	Support unit C _a	Rated running distance L _a (km)	Ball screw C _{0a}	Linear guides C ₀	
10	φ 20	8230 (High grade)	44600	7600	10	17100 (High grade)	42000	3380
		10900 (Precision)				21700 (Precision)		
20	φ 20	5300 (High grade)	35400	7600	20	10300 (High grade)	42000	3380
		7060 (Precision)				12700 (Precision)		

Basic static moment load of linear guide

Slider	Basic static moment load (N · m)		
	RollingM _{RO}	PitchingM _{PO}	YawingM _{YO}
Single	1460	610	610

MCH10 (Double slider)

Accuracy grade: High grade (H)



Dimension of MCH10 (Double slider)

Reference number	Nominal stroke (mm)	Stroke limit(mm) (K1 is not equipped)	Ball screw lead (mm)	Body length (mm)					Inertia $\times 10^6(\text{kg} \cdot \text{m}^2)$	Mass (kg)
				L ₁	L ₂	G	L ₃	n		
★MCH10025H10D	250	282 (314)	10	689	580	65	450	4	67.1	15
★MCH10025H20D		20	82.4							
★MCH10035H10D	350	382 (414)	10	789	680	40	600	5	77.3	17
★MCH10035H20D		20	92.5							
★MCH10045H10D	450	482 (514)	10	889	780	15	750	6	87.5	20
★MCH10045H20D		20	103							
★MCH10055H10D	550	582 (614)	10	989	880	65	750	6	97.7	22
★MCH10055H20D		20	113							
★MCH10065H10D	650	682 (714)	10	1 089	980	40	900	7	108	24
★MCH10065H20D		20	123							
★MCH10075H20D	750	782(814)	20	1 189	1 080	15	1 050	8	133	26
★MCH10085H20D	850	882(914)	20	1 289	1 180	65	1 050	8	143	28
★MCH10095H20D	950	982(1 014)	20	1 389	1 280	40	1 200	9	154	30
★MCH10105H20D	1 050	1 082(1 114)	20	1 489	1 380	15	1 350	10	164	33

Items not marked are available from standard stock. Items marked with ★ are designated as "quick delivery item" upon request.

Monocarrier dynamic torque specification (N · cm)

Ball screw lead (mm)	Dynamic torque (N · cm)	
	10	4.2~15.6
20	5.0~19.6	

1. Frictional resistance of NSK K1 is included in the dynamic torque in the table.
2. Grease is packed into ball screw, linear guide parts and support unit.
3. Consult NSK for life estimates under large moment loads.

Basic load rating

Lead (mm)	Shaft dia (mm)	Basic dynamic load rating (N)				Basic static load rating (N)		Support unit Load limit (N)
		Ball screw C _a	linear guides C	Support unit C _a	Rated running distance L _a (km)	Ball screw C _{0a}	Linear guides C ₀	
10	φ 20	8230 (High grade)	44600	7600	10	17100 (High grade)	42000	3380
		10900 (Precision)				21700 (Precision)		
20	φ 20	5300 (High grade)	35400	7600	20	10300 (High grade)	42000	3380
		7060 (Precision)				12700 (Precision)		

Basic static moment load of linear guide

Slider	Basic static moment load (N · m)		
	RollingM _{RO}	PitchingM _{PO}	YawingM _{YO}
Double	2920	3430	3430