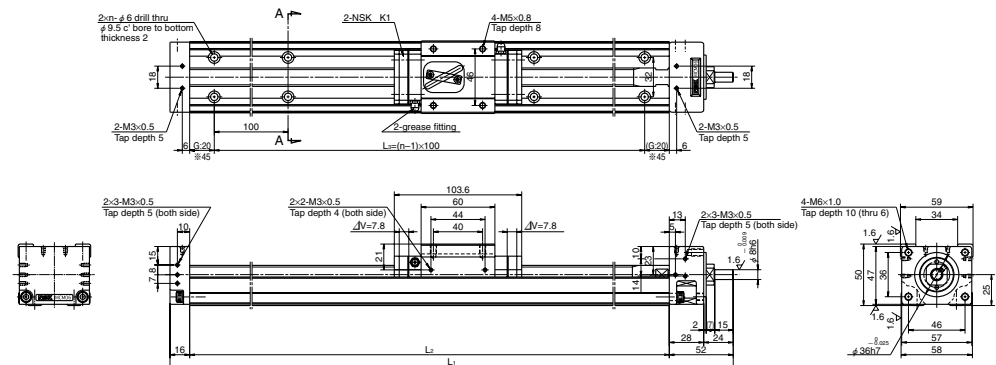


MCM06

Accuracy grade: High grade (H)



Dimension of MCM06 (Single slider)

ΔL is thickness of NSK K1

Reference number	Nominal stroke (mm)	Stroke limit(mm) (K1 is not equipped)	Ball screw lead (mm)	Body length (mm)			No. of mounting hole n	Inertia $\times 10^{-4}$ (kg · m ²)	Mass (kg)
				L_1	L_2	L_3			
※MCM06005H05K00	50	85	5	258	190	100	2	0.083	2.7
★MCM06005H10K00		(102)	10						
MCM06010H05K00	100	135	5	308	240	200	3	0.103	3.0
MCM06010H10K00		(152)	10						
MCM06020H05K00	200	235	5	408	340	300	4	0.142	3.8
MCM06020H10K00		(252)	10						
MCM06030H05K00	300	335 (352)	5	508	440	400	5	0.180	4.5
MCM06030H10K00			10					0.150	
MCM06030H20K00			20					0.196	
MCM06040H05K00	400	435 (452)	5	608	540	500	6	0.219	5.2
MCM06040H10K00			10					0.180	
MCM06040H20K00			20					0.225	
★MCM06050H05K00	500	535 (552)	5	708	640	600	7	0.258	6.0
MCM06050H10K00			10					0.209	
MCM06050H20K00			20					0.255	
★MCM06060H10K00	600	635 (652)	10	808	740	700	8	0.239	6.7
★MCM06060H20K00			20					0.284	
MCM06070H10K00	700	735 (752)	10	908	840	800	9	0.268	7.4
MCM06070H20K00			20					0.314	
★MCM06080H10K00	800	835 (852)	10	1008	940	900	10	0.298	8.1
★MCM06080H20K00			20					0.343	

Dimension G is 45 for those marked with ※.

Items not marked are available from standard stock.

Items marked with ★ are designated as "quick delivery item" upon request.

Monocarrier dynamic torque specification (N · cm)

Ball screw lead (mm)	Torque (N · cm)	
	5	1.9~ 7.4
	10	2.2~ 8.6
20	2.8~11.0	

1. Frictional resistance of NSK K1 is included in the dynamic torque in the table.
2. Grease is packed into ball screw, linear guide parts and support unit.
3. Consult NSK for life estimates under large moment loads.
4. Stroke limit = stroke + (17.5[margin] × 2)

Basic load rating

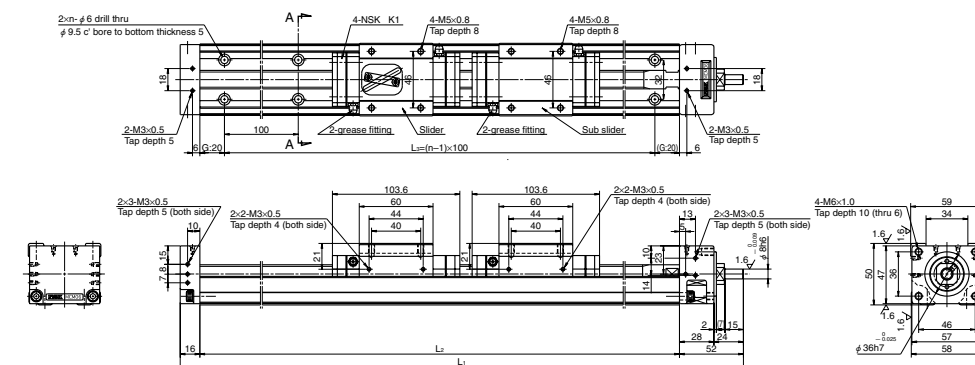
Lead l (mm)	Shaft dia d (mm)	Basic dynamic load rating (N)				Basic static load rating (N)		Support unit Load limit (N)
		Ball screw C_a	linear guides C	Support unit C_a	Rated running distance L_a (km)	Ball screw C_{0a}	Linear guides C_0	
5	ϕ 16	7310	25200	6550	5	13500	17000	2730
10	ϕ 15	7060	20000		10	12700		
20		4560	15900		20	7750		

Basic static moment load of linear guide

Slider	Basic static moment load (N · m)		
	Rolling M_{RO}	Pitching M_{PO}	Yawing M_{YO}
Single	415	174	174

MCM06 (Double slider)

Accuracy grade: High grade (H)



Dimension of MCM06 (Double slider)

ΔL is thickness of NSK K1

Reference number	Nominal stroke (mm)	Stroke limit(mm) (K1 is not equipped)	Ball screw lead (mm)	Body length (mm)			No. of mounting hole n	Inertia $\times 10^{-4}$ (kg · m ²)	Mass (kg)
				L_1	L_2	L_3			
★MCM06011H05D00	110	133 (164)	5	408	340	300	4	0.145	4.4
★MCM06011H10D00			10					0.136	
★MCM06021H05D00			5					0.184	
★MCM06021H10D00	210	233 (264)	10	508	440	400	5	0.166	5.1
★MCM06021H20D00			20					0.257	
★MCM06031H05D00			5					0.223	
★MCM06031H10D00	310	333 (364)	10	608	540	500	6	0.195	5.8
★MCM06031H20D00			20					0.286	
★MCM06041H05D00			5					0.262	
★MCM06041H10D00	410	433 (464)	10	708	640	600	7	0.224	6.6
★MCM06041H20D00			20					0.316	
★MCM06051H10D00			510					533 (564)	
★MCM06051H20D00	20	0.345							
★MCM06061H10D00	610	633 (664)		10	908	840	800		9
★MCM06061H20D00			20	0.375					
★MCM06071H10D00			710	733 (764)				10	
★MCM06071H20D00	20	0.404							

Items not marked are available from standard stock. Items marked with ★ are designated as "quick delivery item" upon request.

Monocarrier dynamic torque specification (N · cm)

Ball screw lead (mm)	Torque (N · cm)	
	5	2.3~ 8.5
	10	2.7~10.9
20	4.0~15.9	

1. Frictional resistance of NSK K1 is included in the dynamic torque in the table.
2. Grease is packed into ball screw, linear guide parts and support unit.
3. Consult NSK for life estimates under large moment loads.
4. Stroke limit = stroke + (11.4[margin] × 2)

Basic load rating

Lead l (mm)	Shaft dia d (mm)	Basic dynamic load rating (N)				Basic static load rating (N)		Support unit Load limit (N)
		Ball screw C_a	linear guides C	Support unit C_a	Rated running distance L_a (km)	Ball screw C_{0a}	Linear guides C_0	
5	ϕ 16	7310	25200	6550	5	13500	17000	2730
10	ϕ 15	7060	20000		10	12700		
20		4560	15900		20	7750		

Basic static moment load of linear guide

Slider	Basic static moment load (N · m)		
	Rolling M_{RO}	Pitching M_{PO}	Yawing M_{YO}
Double	825	1220	1220