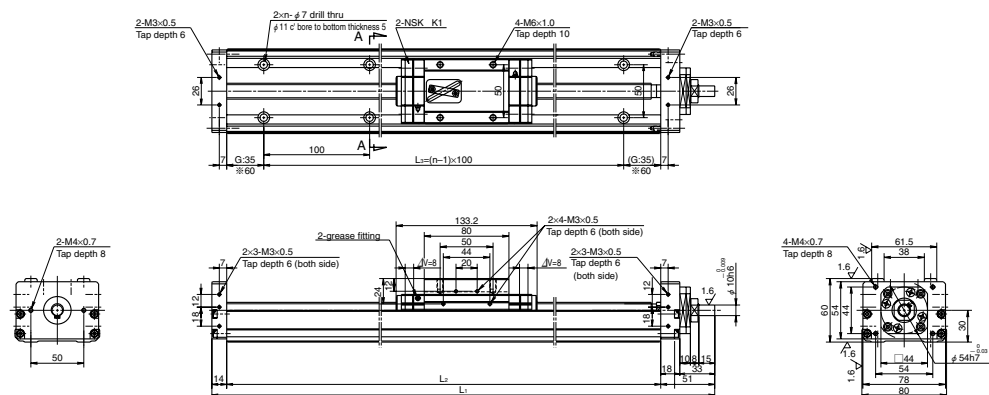


MCM08

Accuracy grade: High grade (H)



Dimension of MCM08 (Single slider)

ΔV is thickness of NSK K1

Reference number	Nominal stroke (mm)	Stroke limit(mm) (K1 is not equipped)	Ball screw lead (mm)	Body length (mm)			No. of mounting hole <i>n</i>	Inertia $\times 10^4$ (kg · m ²)	Mass (kg)
				L ₁	L ₂	L ₃			
★※MCM08005H05K00	50	85 (101)	5	285	220	100	2	0.101	4.1
★ MCM08010H05K00	100	135 (151)	5	335	270	200	3	0.120	4.6
MCM08010H10K00		10	0.114						
★※MCM08015H05K00	150	185 (201)	5	385	320	200	3	0.139	5.1
★ MCM08020H05K00	200	235 (251)	5	435	370	300	4	0.159	5.5
MCM08020H10K00		10	0.144						
MCM08030H10K00	300	335 (351)	10	535	470	400	5	0.173	6.5
MCM08030H20K00		20	0.249						
MCM08040H10K00	400	435 (451)	10	635	570	500	6	0.203	7.4
MCM08040H20K00		20	0.279						
MCM08050H10K00	500	535 (551)	10	735	670	600	7	0.232	8.4
MCM08050H20K00		20	0.308						
MCM08060H10K00	600	635 (651)	10	835	770	700	8	0.262	9.3
MCM08060H20K00		20	0.338						
★ MCM08070H10K00	700	735 (751)	10	935	870	800	9	0.291	10.5
★ MCM08070H20K00		20	0.367						
★ MCM08080H10K00	800	835 (851)	10	1035	970	900	10	0.320	11.2
★ MCM08080H20K00		20	0.396						

Dimension G is 60 for those marked with ※.

Items not marked are available from standard stock. Items marked with ★ are designated as "quick delivery item" upon request.

Monocarrier dynamic torque specification (N · cm)

Ball screw lead (mm)	5	
	1.0~ 5.9	2.0~ 7.8
	2.0~ 7.8	2.5~ 10.8

- Frictional resistance of NSK K1 is included in the dynamic torque in the table.
- Grease is packed into ball screw, linear guide parts and support unit.
- Consult NSK for life estimates under large moment loads.
- Stroke limit = stroke + (17.5[margin] × 2)

Basic load rating

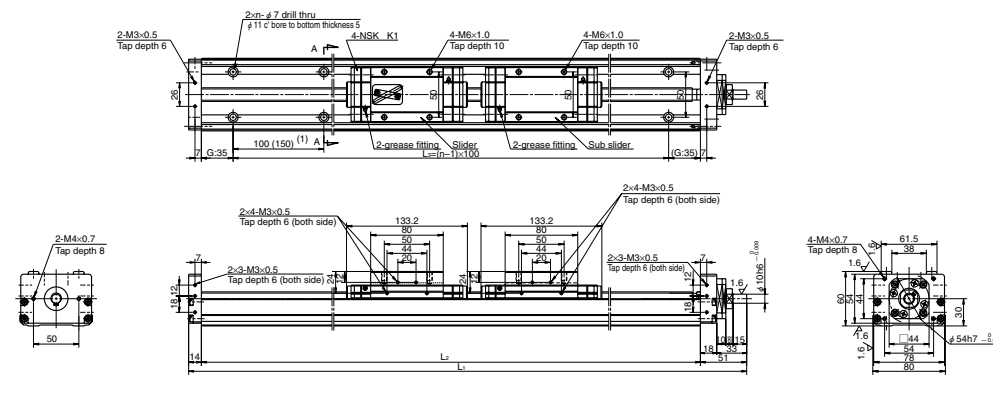
Lead <i>l</i> (mm)	Shaft dia <i>d</i> (mm)	Basic dynamic load rating (N)				Basic static load rating (N)			Support unit Load limit (N)
		Ball screw <i>C_a</i>	linear guides <i>C</i>	Support unit <i>C_a</i>	Rated running distance <i>L_a</i> (km)	Ball screw <i>C_{0a}</i>	Linear guides <i>C₀</i>		
5	φ 16	7310	30800	7100	5	13500	22800	3040	
10	φ 15	7060	24400		10	12700			
20		4560	19400		20	7750			

Basic static moment load of linear guide

Slider	Basic static moment load (N · m)		
	Rolling <i>M_{RO}</i>	Pitching <i>M_{PO}</i>	Yawing <i>M_{YO}</i>
Single	770	300	300

MCM08 (Double slider)

Accuracy grade: High grade (H)



Dimension of MCM08 (Double slider)

ΔV is thickness of NSK K1

Reference number	Nominal stroke (mm)	Stroke limit(mm) (K1 is not equipped)	Ball screw lead (mm)	Body length (mm)			No. of mounting hole <i>n</i>	Inertia $\times 10^4$ (kg · m ²)	Mass (kg)
				L ₁	L ₂	L ₃			
★●MCM08008H10D00	80	104 (136)	10	435	370	300	3	0.169	6.5
★ MCM08018H10D00	180	204 (236)	10	535	470	400	5	0.199	7.5
MCM08018H20D00		20	0.351						
★ MCM08028H10D00	280	304 (336)	10	635	570	500	6	0.228	8.4
MCM08028H20D00		20	0.380						
★ MCM08038H10D00	380	404 (436)	10	735	670	600	7	0.257	9.4
MCM08038H20D00		20	0.409						
★ MCM08048H10D00	480	504 (536)	10	835	770	700	8	0.287	10.3
MCM08048H20D00		20	0.439						
★ MCM08058H10D00	580	604 (636)	10	935	870	800	9	0.316	11.5
MCM08058H20D00		20	0.468						
★ MCM08068H10D00	680	704 (736)	10	1035	970	900	10	0.346	12.2
MCM08068H20D00		20	0.498						

Dimension (1) is 150mm for those marked with ●.

Items not marked are available from standard stock. Items marked with ★ are designated as "quick delivery item" upon request.

Monocarrier dynamic torque specification (N · cm)

Ball screw lead (mm)	10	
	2.5~ 10.8	4.0~ 17.2

- Frictional resistance of NSK K1 is included in the dynamic torque in the table.
- Grease is packed into ball screw, linear guide parts and support unit.
- Consult NSK for life estimates under large moment loads.
- Stroke limit = stroke + (11.8[margin] × 2)

Basic load rating

Lead <i>l</i> (mm)	Shaft dia <i>d</i> (mm)	Basic dynamic load rating (N)				Basic static load rating (N)			Support unit Load limit (N)
		Ball screw <i>C_a</i>	linear guides <i>C</i>	Support unit <i>C_a</i>	Rated running distance <i>L_a</i> (km)	Ball screw <i>C_{0a}</i>	Linear guides <i>C₀</i>		
5	φ 16	7310	30800	7100	5	13500	22800	3040	
10	φ 15	7060	24400		10	12700			
20		4560	19400		20	7750			

Basic static moment load of linear guide

Slider	Basic static moment load (N · m)		
	Rolling <i>M_{RO}</i>	Pitching <i>M_{PO}</i>	Yawing <i>M_{YO}</i>
Double	1540	2050	2050